

Bling Tree Sampler

A FLAT-FOLD PROJECT

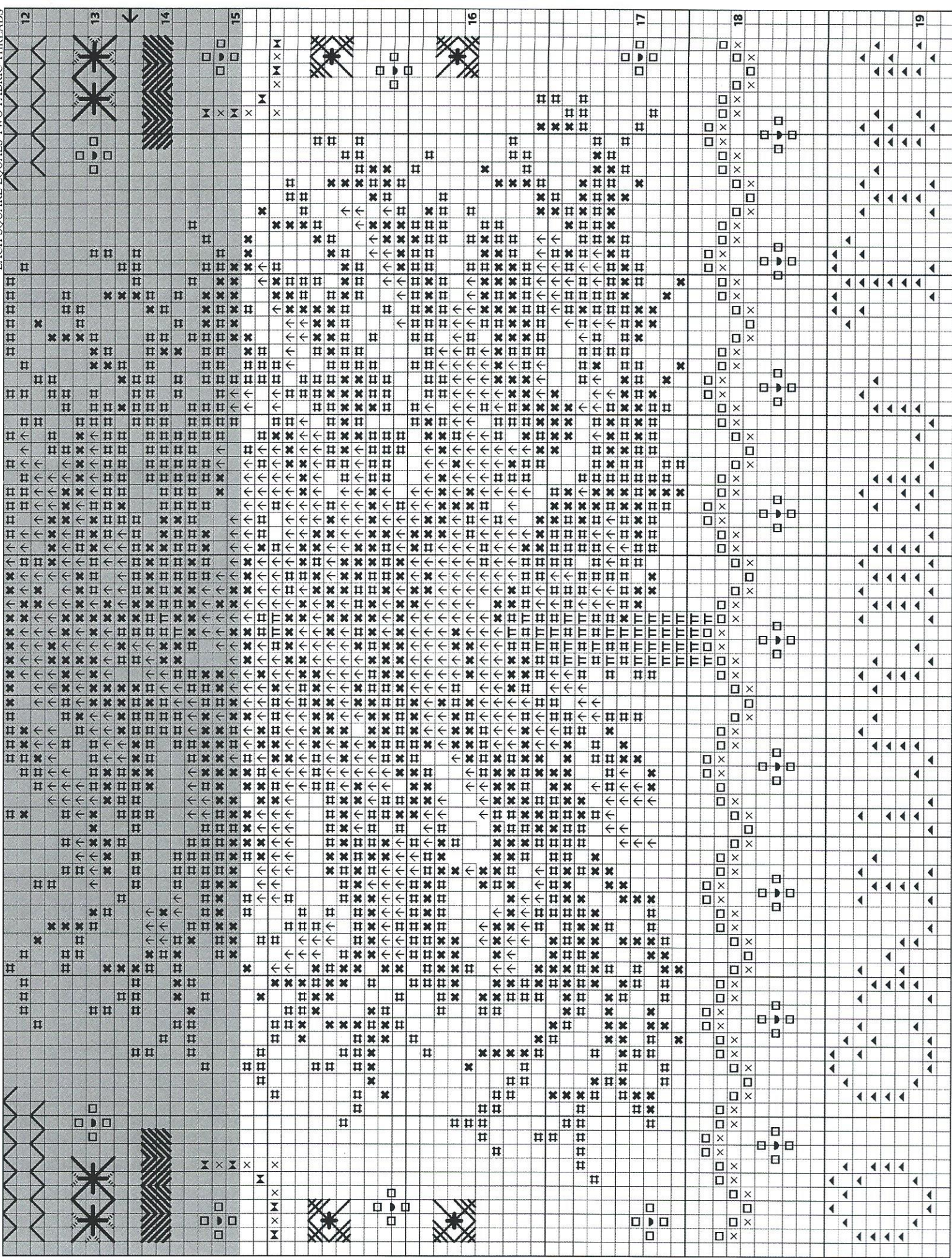
Original Designs by Thea Dueck
Finishing Techniques by Lisa Archer

The Victoria SAMPLER



The chart is a 15x15 grid. Each square represents two fabric threads. The design is composed of various geometric and floral patterns. The patterns are arranged in a way that they interlock and create a larger, more complex design in the center. The patterns include zig-zags, diamonds, and floral motifs. The chart is divided into sections by vertical lines, with some sections containing specific symbols like squares and triangles. The patterns are arranged in a way that they interlock and create a larger, more complex design in the center.

EACH SQUARE EQUALS TWO FABRIC THREADS

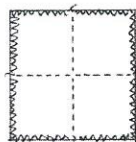


MAIN CHART - BOTTOM (TOP SECTION IS REPEATED FROM PREVIOUS PAGE) COPYRIGHT © 2019 THEA DUECK

Christmas Bling Tree ...

Christmas isn't complete without a Christmas Tree all gussied up with Christmas Bling! I remember the excitement I felt the day the "Tree" went up like it was yesterday. The earthy smell of the fir boughs, the soft prickle of the needles as we set it up in the living room, and the sparkling ornaments, all lovingly wrapped and boxed the season before by my mother. My favorite parts were the glass ornaments; my special silver glass deer, or the lovely painted birds you clip to the branches, and the long narrow balls.. every one of them sparkling in the lights of the candles we lit in the evenings. So, when I decided to create this tree, I remembered the sparkle and glitz I treasured as a girl. This tree gives me a similar feeling of sparkle and bling! So the order of stitching is this: 1. Cross Stitch the tree, 2. stitch the background which are the words to O Christmas Tree interspersed with specialty stitches, 3. finally dress up your tree the way YOU want by sewing on all the special decorations (included in our accompanying Acc Pack). You can follow the photo on front cover or do your own thing! I suggest that you place the larger pieces first (like the lightbulbs for instance) and then the holly, and then smaller and smaller beads or sequin ornaments. That way it's easier to get an overall balanced effect. Christmas is a perfect time every year to decorate. Finish your tree as a flat fold and you can store your treasure easily! I hope you enjoy creating your own special Bling Tree! - Thea

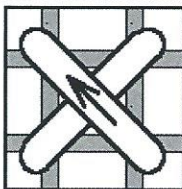
Prepare your Materials: Unpack your accessory pack and sort your threads according to the BUNDLES shown on the Materials list. Remember to unpack one bundle at a time, as each



bundle has one very easily identifiable thread in it. Overcast or zig zag raw edges of fabric to prevent unraveling. Fold the fabric in half twice, and baste a sewing thread along both the horizontal and vertical folds, which run along the middle of your fabric. Once

you start stitching, these central basting lines can be used to help you position your stitches on the fabric. A roller frame is recommended to prevent distortion and handling of the fabric.

Getting Started: Follow the symbols for colour, and use two strands of floss on 28ct for each Cross Stitch. Make sure that all the top arms face the same way in the Cross Stitch sections of the design. With overdyed floss it is important to use two matching strands and to complete each Cross Stitch before moving on to the next stitch. Each of the specialty stitches, including back stitch, can be started with a waste knot as follows: make a knot at the end of the thread, and push needle through the front of the fabric near the zig zag edge. Come up at the appropriate spot and begin stitching. Later, cut the knot from the front of the fabric, pull the tail to the back and carefully weave through stitches already in place. Give yourself approx. 3" of thread!



BEYOND CROSS STITCH LEARNING KITS ARE FUN AND EASY!

Specialty Stitches are fun and easy to stitch! If you want to learn special techniques, use Thea's "Beyond Cross Stitch" series of Learning Kits. There are 60 kits available. Each kit allows the counted Cross Stitcher to easily learn a NEW Specialty Stitch at a time! Level 5 and 6 will show if any of the Hardanger Stitches used in this sampler. Beyond Cross Stitch kits are Found in Fine Needlework and Craft stores everywhere!

Symbols Fibres and Beads

BUNDLE A

- ▶ DMC #12 Perle Cotton #642 - beige grey dk (thin twist)
- Rainbow Gallery Gold Rush #14 (thick braid) - artie gold
- Kreinik Mori #1117 - red dk
- ↑ Needlepoint Inc. #401 - green lt
- TT Needlepoint Inc. #973 - grey brown dk

BUNDLE B

- × Kreinik #4 Braid #102 - metallic vatican gold
- Kreinik Mori #8050 - black
- ‡ Needlepoint Inc. #544 - green med
- Needlepoint Inc. #964 - taupe dk

BUNDLE C

- ▲ Gloriana silk #201 "Hazelnut" - browns
- Kreinik #4 Braid #002 - metallic gold
- ✕ Kreinik Mori #4077 - blue green dk
- Kreinik Mori #8000 - white
- Needlepoint Inc. #771 - yellow

BUNDLE D

- SJ Designs petite bead #1859 - silver
- SJ Designs 5mm disc bead - mother of pearl
- Specialty seed bead #101 - mixed colors
- Specialty large seed bead #434 - orange
- Specialty large seed bead #422 - yellow
- Specialty large seed bead #466 - aqua
- Specialty large seed bead #478 - cobalt blue
- Star Sequin - metallic gold
- Flower Sequin - metallic red
- Flower Sequin - metallic turquoise lt
- Flower Sequin - metallic grape
- Flower Sequin - metallic cobalt blue
- Round Sequin large - metallic gold
- Round Sequin large - metallic cobalt blue
- Round Sequin medium - metallic gold
- Round Sequin medium - metallic red
- Round Sequin medium - metallic kelly green
- Round Sequin small - metallic gold
- Round Sequin small - metallic silver
- Round Sequin small - metallic cobalt blue
- Round Sequin small - metallic razzleberry

BUNDLE E

- Small Gingerbread Man buttons
- Micro Mini Round buttons - topaz
- Small Holly buttons
- Present button - green with red bow
- Present button - red with gold bow
- Christmas Light button - green
- Christmas Light button - red
- Christmas Light button - blue
- Christmas Light button - yellow
- Christmas Light button - purple

ADDITIONAL MATERIALS REQUIRED

- #24 tapestry needle
- #26 tapestry needle
- #10 short beading needle

This leaflet has been designed and printed with utmost care. However, we cannot be held responsible for human and/or technical errors. Please let us know if you notice an error!

Special Thanks to: Lisa, Kathleen and Lexa
at the Victoria Sampler

INSTRUCTIONS:

Design area: 86w x 116h (6.1" w x 8.3" h)

Model: 28ct Clay Cashel Linen - Cut fabric: 11" w x 14" h

1. CROSS STITCH TREE: Cross Stitch with 2 strands of silk floss, according to symbols on Main Chart. **Diagram A.**

2. LETTERING: Using 1 strand of Needlepoint Inc. #973 grey brown dk Back Stitch the words "O Christmas Tree" as shown on Main Chart. **Diagram B.**

3. ZIG ZAG MOSAIC STITCH: Work diagonal Straight Stitches over four fabric threads with 1 strand of DMC #12 Perle Cotton #642 beige grey dk, shown as a thick line on Main Chart. **Diagram C1.** Using 1 strand of Kreinik #4 Braid #102 metallic vatican gold work three diagonal Straight Stitches across the first and every other long diagonal Straight Stitch, shown as a dotted line on Main Chart. **Diagram C2.** Work three diagonal Straight Stitches across the second and every other long diagonal Straight Stitch with 1 strand of Needlepoint Inc. #964 taupe dk, shown as a thin line on Main Chart. **Diagram C3. Note:** Diagram's C1, C2 & C3 shows a portion of the stitches on the left side. Follow Main Chart for placement of the remaining stitches. Some of the stitches are compensating stitches. Using 2 strands of Kreinik Mori #8000 white Cross Stitch according to symbols on Main Chart. **Diagram A.** Attach SJ Designs petite bead #1859 silver with 1 strand of Kreinik Mori #8000 white according to symbols on Main Chart. Go through each bead twice to ensure stability.

4. LETTERING: Using 1 strand of Needlepoint Inc. #973 grey brown dk Back Stitch the words "How lovely are thy branches" as shown on Main Chart. **Diagram B.** Cross Stitch snowflakes with 2 strands of Kreinik Mori #8000 white according to symbols on Main Chart. **Diagram A.** Using 1 strand of Kreinik Mori #8000 white attach SJ Designs petite bead #1859 silver according to symbols on Main Chart. Go through each bead twice to ensure stability.

5. PARTIAL RHODES STITCH: Work Partial Rhodes Stitch over six fabric threads with 1 strand of Gloriana silk #201 "Hazelnut", as shown on Main Chart. **Diagram D.** Using 2 strands of Kreinik Mori #8000 white Cross Stitch according to symbols on Man Chart. **Diagram A.** Attach SJ Designs petite bead #1859 silver with 1 strand of Kreinik Mori #8000 white according to symbols on Main Chart. Go through each bead twice to ensure stability. Using 1 strand of Kreinik #4 Braid #002 metallic gold Back Stitch the line under the Partial Rhodes Stitches, as shown on Main Chart. **Diagram B.**

6. LETTERING: Back Stitch the words "Your boughs so green in" with 1 strand of Needlepoint Inc. #973 grey brown dk as shown on Main Chart. **Diagram B.** Using 2 strands of Kreinik Mori #8000 white Cross Stitch snowflakes according to symbols on Main Chart. **Diagram A.** Attach SJ Designs petite bead #1859 silver with 1 strand of Kreinik Mori #8000 white according to symbols on Main Chart. Go through each bead twice to ensure stability.

7. REVERSED PARTIAL SCOTCH STITCH: Work Reversed Partial Scotch Stitch over four fabric threads with 1 strand of Needlepoint Inc. #964 taupe dk. **Diagram E1.** Using 1 strand of Kreinik #4 Braid #102 vatican gold work vertical and diagonal Straight Stitches below, shown on Main Chart as a dotted line. **Diagram E2.** Cross Stitch with 2 strands of Kreinik Mori #8000 white according to symbols on Main Chart. **Diagram A.** Using 1 strand of Kreinik Mori #8000 white attach SJ Designs petite bead #1859 silver according to symbols on Main Chart. Go through each bead twice to ensure stability.

8. LETTERING: Using 1 strand of Needlepoint Inc. #973 grey brown dk Back Stitch the words "summertime stay bravely" as shown on Main Chart. **Diagram B.**

9. DOUBLE HERRINGBONE STITCH: Work Double Herringbone Stitch from left to right over four fabric threads with two colours of thread. Using 1 strand of Gloriana silk #201 "Hazelnut" work the first row of Herringbone Stitches, shown as a thick line on Main Chart. **Diagram F1.** Work the second row of Herringbone Stitches with 1 strand of Kreinik #4 Braid #002 metallic gold, shown as a thin line on Main Chart. **Diagram F2.** Using 2 strands of Kreinik Mori #8000 white

Cross Stitch according to symbols on Main Chart. **Diagram A.** Attach SJ Designs petite bead #1859 silver with 1 strand of Kreinik Mori #8000 white according to symbols on Main Chart. Go through each bead twice to ensure stability.

10. LETTERING: Using 1 strand of Needlepoint Inc. #973 grey brown dk Back Stitch the words "green in wintertime" as shown on Main Chart. **Diagram B.**

11. QUEEN STITCH: Work two rows of Queen Stitches over four fabric threads with two colours of thread. **Note:** A Queen Stitch consists of four long Straight Stitches each anchored with a short Straight Stitch. **Diagram G1.** Using 1 strand of Needlepoint Inc. #964 taupe dk work the bottom row of Queen Stitches, shown as a thin line on Main Chart. **Diagram G2.** Work the top row of Queen Stitches with 1 strand of Gloriana silk #201 "Hazelnut", shown as a thick line on Main Chart. **Diagram G3. Note:** The Queen Stitches on the right side of the tree are worked closer together. **Diagram G4.** Using 2 strands of Kreinik Mori #8000 white Cross Stitch according to symbols on Main Chart. **Diagram A.** Attach SJ Designs petite bead #1859 silver with 1 strand of Kreinik Mori #8000 white according to symbols on Main Chart. Go through each bead twice to ensure stability.

12. ZIG ZAG STITCH: Using 1 strand of Needlepoint Inc. #964 taupe dk work two rows of Zig Zag Stitch, as shown on Main Chart. **Diagram H.**

13. MODIFIED SMYRNA CROSS: Work Modified Smyrna Crosses over six fabric threads with 1 strand of DMC #12 Perle Cotton #642 beige grey dk, as shown on Main Chart. Using 1 strand of Kreinik #4 Braid #102 vatican gold work short diagonal Straight Stitches around the Modified Smyrna Crosses, shown as a dotted line on Main Chart.

Diagram I. Cross Stitch with 2 strands of Kreinik Mori #8000 white according to symbols on Main Chart. **Diagram A.** Using 1 strand of Kreinik Mori #8000 white attach SJ Designs petite bead #1859 silver according to symbols on Main Chart. Go through each bead twice to ensure stability.

14. REVERSED SCOTCH STITCH: Using 1 strand of Gloriana silk #201 "Hazelnut" work Reversed Scotch Stitch as shown on Main Chart. **Diagram J.**

15. CROSS STITCH: Cross Stitch with either 2 strands silk floss OR 1 strand of DMC #12 Perle Cotton #642 beige grey dk OR 1 strand of Kreinik #4 Braid #102 vatican gold according to symbols on Main Chart. **Diagram A.** Using 1 strand of Kreinik Mori #8000 white attach SJ Designs petite bead #1859 silver according to symbols on Main Chart. Go through each bead twice to ensure stability.

16. MODIFIED SMYRNA TRIPLE RICE STITCH: Using 1 strand of Needlepoint Inc. #964 taupe dk work a large Cross Stitch over six fabric threads. Work three diagonal Straight Stitches across three of the legs of the large Cross Stitch with 1 strand of Needlepoint Inc. #964 taupe dk. Using 1 strand of Kreinik #4 Braid #102 vatican gold work an Upright Cross Stitch on top of the large Cross Stitch, shown as a thick line on Main Chart. **Diagram K. Note:** Diagram K shows the upper left stitch. Follow Main Chart for placement of the remaining three stitches. Cross Stitch with 2 strands of Kreinik Mori #8000 white according to symbols on Main Chart. **Diagram A.** Using 1 strand of Kreinik Mori #8000 white attach SJ Designs petite bead #1859 silver according to symbols on Main Chart. Go through each bead twice to ensure stability.

17. CROSS STITCH: Cross Stitch snowflakes with 2 strands of Kreinik Mori #8000 white according to symbols on Main Chart. **Diagram A.** Using 1 strand of Kreinik Mori #8000 white attach SJ Designs petite bead #1859 silver according to symbols on Main Chart. Go through each bead twice to ensure stability.

18. TREE SKIRT LACE: Using either 2 strands of Kreinik Mori #8000 white OR 1 strand of Kreinik #4 Braid #102 vatican gold Cross Stitch according to symbols on Main Chart. **Diagram A.** Attach SJ Designs petite bead #1859 silver with 1 strand of Kreinik Mori #8000 white according to symbols on Main Chart. Go through each bead twice to ensure stability.

19. LETTERING: Cross Stitch the words "O Christmas Tree" with 2

strands of Gloriana silk #201 "Hazelnut" according to symbols on Main Chart. **Diagram A.**

20. TREE DECORATIONS: *The following instructions are a guide to decorating the tree. Please feel free to attach the decorations where you would like to see them.* **Garland:** Couch down 1 strand of Rainbow Gallery Gold Rush #14 artie gold with 1 strand of Kreinik #4 Braid #002 metallic gold as shown on the Tree Decorations Placement map.

Diagram L. Xmas Light Buttons: Using 2 strands of Kreinik Mori #8050 black attach the xmas light buttons as shown on **Diagram L.**

Note: End off thread after each button. **Holly Buttons:** Attach the holly buttons with 2 strands of Kreinik Mori #8050 black as shown on **Diagram L.** **Note:** End off thread after each button. **Present Buttons:**

Using 1 stand of Kreinik #4 Braid #002 metallic gold attach the red present with the gold bow. Attach the green present with the red bow with 2 strands of Kreinik Mori #1117 red. Go over each present three times to attach securely. **Sequins and Beads:** Using 2 strands of Needlepoint Inc. #771 yellow attach the flower sequins as shown on **Diagram L.**

Attach the large star sequin at the top of tree with 2 strands of Needlepoint Inc. #771 yellow as shown on **Diagram L.** **Note:** Go over each sequin five times to attach securely. Using 2 strands of Needlepoint Inc. #771 yellow attach the small round razzleberry sequin and a specialty seed bead mixed color on top of the cobalt blue flower sequin. Attach a specialty large seed bead yellow on top of the turquoise lt flower sequin with 2 strands of Needlepoint Inc. #771

yellow. Using 2 strands of Needlepoint Inc. #771 yellow attach a specialty large seed bead orange on top of grape flower sequin. Attach a specialty large seed bead aqua on top of the red flower sequin with 2 strands of Needlepoint Inc. #771 yellow. Using 2 strands of Kreinik Mori #1117 red attach a medium round gold sequin with a large seed bead cobalt blue on top as shown on **Diagram L.** Attach a small round silver sequin with a specialty seed bead mixed color on top with 2 strands of Needlepoint Inc. #771 yellow, as shown on **Diagram L.** Using 2 strands of Needlepoint Inc. #771 yellow attach a large round gold sequin with a medium round red sequin, small round colbalt blue sequin and a speciatly seed bead mixed color on top as shown on **Diagram L.** Attach a large round cobalt blue sequin with a small round gold sequin and a speciatly seed bead mixed color on top with 2 strands of Needlepoint Inc. #771 yellow, as shown on **Diagram L.** Using 2 strands of Needlepoint Inc. #771 yellow attach a medium round kelly green sequin and a specialty seed bead mixed color on top as shown on **Diagram L.** Attach SJ Designs 5mm mother of pearl disc beads with 2 strands of Needlepoint Inc. #771 yellow, as shown on **Diagram L.** **Gingerbread Buttons:** Using 2 strands of Needlepoint Inc. #771 yellow attach Gingerbread buttons as shown on **Diagram L.** Straight Stitch hangers if necessary with 2 strands of Needlepoint Inc. #771 yellow. **Micro Mini Round Buttons:** Using 2 strands of Needlepoint Inc. #771 yellow attach the micro mini round buttons topaz as shown on **Diagram L.** Go through each button twice to ensure stability.

Stitch Diagrams

COME UP AT THE DOT AND GO DOWN AT THE ARROW

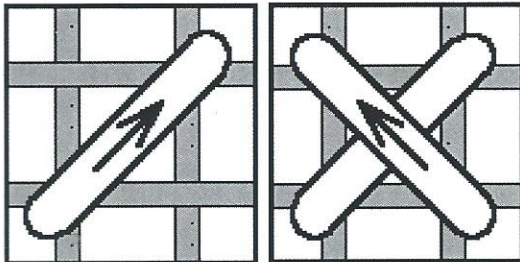


DIAGRAM A. Single Cross Stitch steps 1 and 2

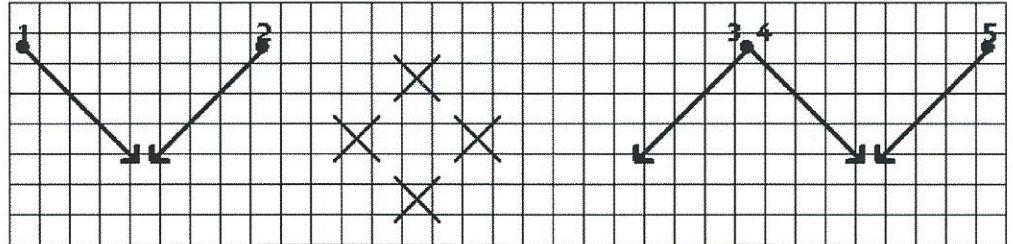


DIAGRAM C1. Zig Zag Mosaic Stitch (left side) - step 1

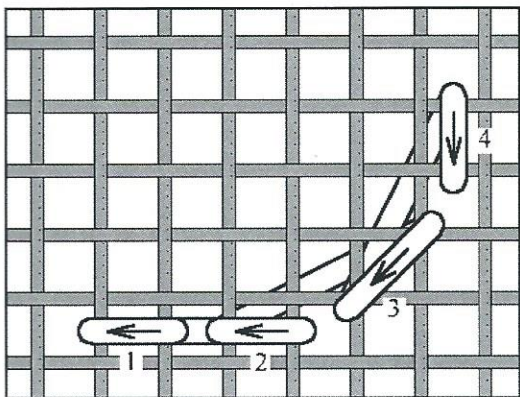


DIAGRAM B. Back Stitch

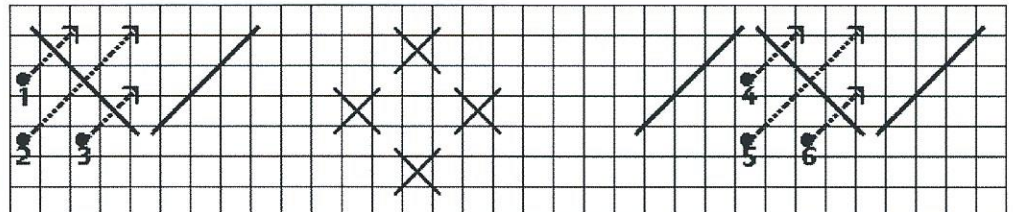


DIAGRAM C2. Zig Zag Mosaic Stitch (left side) - step 2

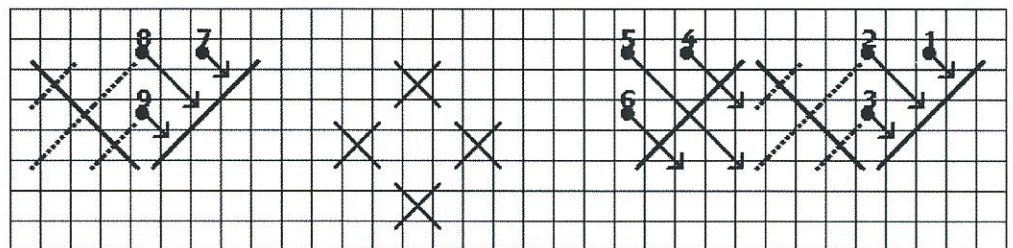


DIAGRAM C3. Zig Zag Mosaic Stitch (left side) - step 3

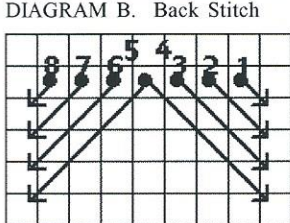


DIAGRAM E1. Partial Scotch Stitch

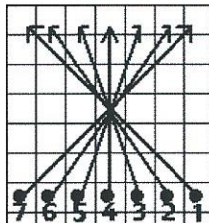


DIAGRAM D. Partial Rhodes Stitch

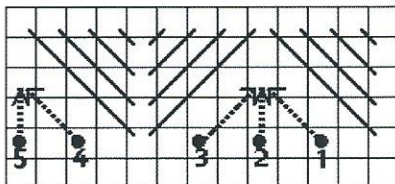


DIAGRAM E2. Partial Scotch Stitch and Vertical and Diagonal Straight Stitch

DIAGRAM F1. Double Herringbone Stitch - step 1

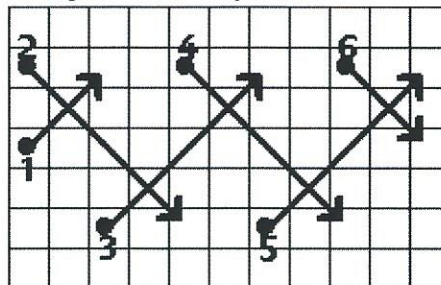
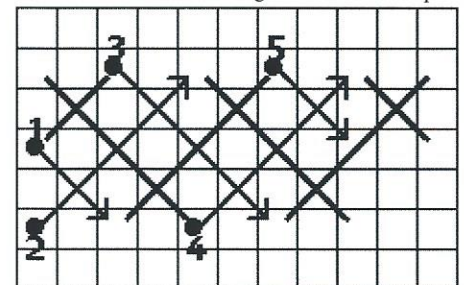


DIAGRAM F2. Double Herringbone Stitch - step 2



Stitch Diagrams

COME UP AT THE DOT AND GO DOWN AT THE ARROW

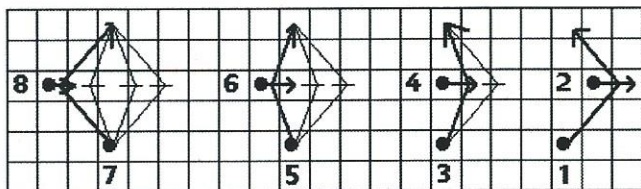


DIAGRAM G1. Queen Stitch progression

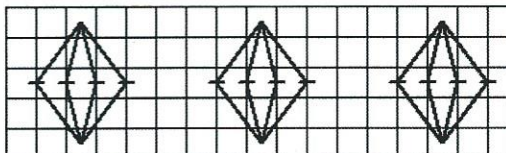


DIAGRAM G2. Queen Stitch Placement - Bottom row left side

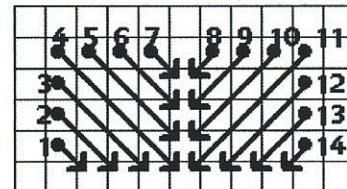


DIAGRAM J. Reversed Scotch Stitch

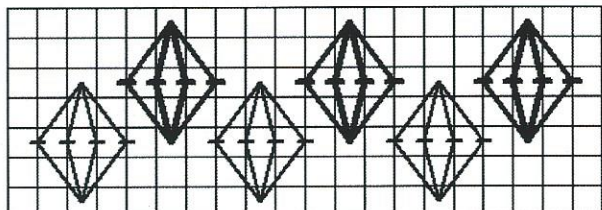


DIAGRAM G3. Queen Stitch Placement - Top and Bottom row left side

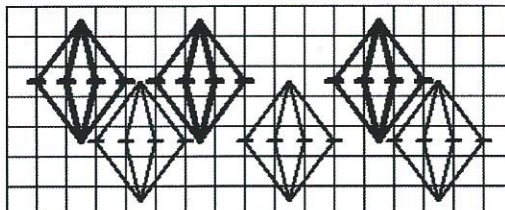


DIAGRAM G4. Queen Stitch Placement - Top and Bottom row right side

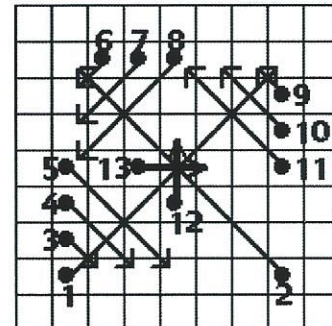


DIAGRAM K. Modified Smyrna Triple Rice Stitch

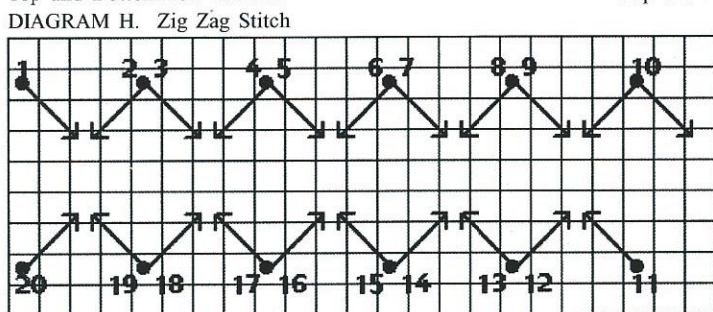


DIAGRAM H. Zig Zag Stitch

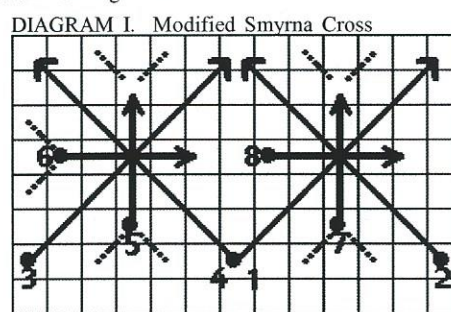


DIAGRAM I. Modified Smyrna Cross

DIAGRAM L. Tree Decorations Placement map

Check Photo on Front Cover

Step by Step Finishing Instructions

Enjoy finishing your Flat Fold!

Suggested Materials

Stitched designs

- 1/2 yd - cotton fabric (complimentary colour)
- 1/4 yd - 1/2" wide ribbon (complimentary colour)
- DMC #8 Perle Cotton #498 - christmas red dk
- 4 ply Mat Board (Acid Free)
- Quilters Cotton Batting OR Fleece Pellon
- Straight Pins
- Aleene's Tacky Glue
- Elmer's Spray Adhesive
- Sharp Paper scissors
- Rotary cutter, clear plastic ruler and cutting mat

1. Using 1 strand of light contrasting colored sewing thread, mark the outside edges of the stitched design by working a basting line fourteen fabric threads away from the stitching on all sides.

2. Cut a piece of 4 ply mat board to fit just inside the basting line that is around the outside of stitched design with a rotary cutter, clear plastic ruler and cutting mat. The 4 ply mat board should be cut approx. 6 15/16" wide X 9 1/8" high.

3. Using a rotary cutter, clear plastic ruler and cutting mat cut four pieces of 4 ply mat board 1 1/2" larger than the first piece of mat board cut in step 2. **Note:** These pieces of 4 ply mat board should be cut approx. 8 7/16" wide X 10 5/8" high. Set aside.

4. Spread a thin layer of Aleene's tacky glue on the mat board rectangle cut in step 2. Place the cotton batting on top of the glue and smooth out any wrinkles with your hands. **Note:** The batting piece should be slightly larger than the mat board.

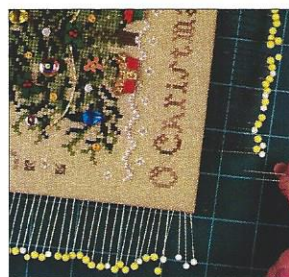
5. Place the batting covered mat board rectangle between two pieces of wax paper and let dry for 2 - 4 hours. After glue has dried trim away excess batting from the edges.

6. Center **stitched design** right side up over the batting side of the 4 ply mat board rectangle, and anchor with straight pins. Stick the straight pins horizontally into the thickness of the mat board to anchor the edges. **Note:** Start with the corners, then the sides and top and bottom. Use the basting line as a guide to center the design. When you are satisfied that the design is centered to your liking, continue to anchor with Straight pins placed at least every 1/8" or so. The basting lines should be on the edge of the mat board. Trim excess design fabric to 1/2" away on all sides from mat board.

7. Squeeze a dab of Aleene's Tacky glue in each corner on the colour side of the 4 ply mat board. Spread glue evenly from the outside edge into the center with foam brush. **Note:** Be careful not to use too much glue! Fold the corner of the linen over onto the glue. Trim excess linen at corners to reduce bulk when mitering.

8. Squeeze a line of Aleene's Tacky glue all around the outside edge on the colour side (back) of the 4 ply mat board. Spread glue evenly from the outside edge into the center with foam brush. **Note:** Be careful not to use too much glue! Fold over the raw edges mitering the corners as you come to them.

After all sides have been folded onto the glue, sandwich the stretched design between two sheets of wax paper and place a brick on top for at least 4 hours to help it dry flat. **Note:** Place a piece of quilters batting on top of the wax paper sandwich so that the beads, sequins and buttons will stay in place and not be crushed by the weight of the brick. Remove pins and set aside.



9. Using a rotary cutter, clear plastic ruler and cutting mat cut 1 piece of cotton fabric 1" wider and 3" longer than the 4 ply mat board pieces cut in step 3. **Note:** This piece of fabric should be cut approx. 9 7/16" wide X 13 5/8" high. Next, cut 3 pieces of cotton fabric 1" wider and longer than the 4 ply mat board cut in step 3. **Note:** These pieces should be cut approx. 9 7/16" wide X 11 5/8" long.

10. Place one of the 4 ply mat board pieces cut in step 3 in front of you with the white side facing. Spray a layer of Elmer's Spray Adhesive over the mat board. Next place the 9 7/16" wide X 13 5/8" high piece of cotton fabric in front of you with the wrong side facing and place the sprayed mat board rectangle on top of the fabric with the adhesive side down. **Note:** Make sure the mat board is placed 1/2" away from the bottom and sides of the cotton fabric. There will be approx. 2 1/2" extending from the top of the mat board. Repeat with the remaining 3 pieces of 4 ply mat board and cotton fabric. **Note:** The mat board will be centred on top of the cotton fabric.

11. Place the first piece of fabric covered mat board from step 10 in front of you with the coloured side facing. Squeeze a line of Aleene's Tacky glue along the outside edge at the sides and bottom. Spread glue evenly from the outside edge into the center with foam brush. **Note:** Be careful not to use too much glue! Fold over the raw edges mitering the corners as you come to them along the sides and bottom. After the sides and bottom have been folded onto the glue, sandwich the fabric covered mat board between two sheets of wax paper and



place a brick on top for at least 2 hours to help it dry flat. **Note:** The 2 1/2" of fabric at the top is not glued to the back. Repeat with the remaining 3 pieces of fabric covered 4 ply mat board. **Note:** All four fabric edges will be glued to the back of the mat board.

12. Place the first piece of fabric covered 4 ply mat

board from step 10 in front of you with the coloured side facing. Squeeze a small line of Aleene's Tacky glue from the centre of the bottom edge up about 1 1/2". Place approx. 1 1/2" of one end of the ribbon on the glue.

13. Spread a thin layer of Aleene's Tacky glue with a foam brush



over the back of the second piece of fabric covered 4 ply mat board. Place glue side down on top of the first piece fabric covered 4 ply mat board. **Note:** The back side of both mat board pieces should be facing each other. Make sure the edges of both pieces are aligned. There should be 2 1/2" of fabric extending from the top. Measure and trim the ribbon so there is approx. 4 1/2" extending from the bottom.



14. Place the third piece of fabric covered 4 ply mat board in front of you with the back side facing and spread a thin layer of Aleene's Tacky glue with a foam brush over the top 2 1/2". Place fabric side down on top of the first two pieces fabric covered mat board. **Note:** Make sure the edges of all three pieces are aligned. Fold over the 2 1/2" of fabric from the first fabric covered mat board onto the glue of the third piece of fabric covered mat board. Squeeze a small line of Aleene's Tacky glue from the centre of the bottom edge up about 1 1/2". Place approx. 1 1/2" of the raw end of

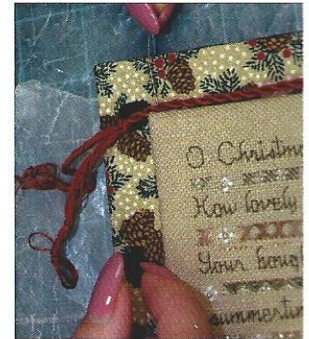


the ribbon on the glue.

15. Spread a thin layer of Aleene's Tacky glue with a foam brush over the back of the fourth piece of fabric covered 4 ply mat board. Place glue side down on top of the third piece fabric covered mat board. **Note:** The back side of both mat board pieces should be facing each other. Make sure the edges of all four pieces are aligned.

16. Place the stretched **stitched design** in front of you with

the back side facing and spread a thin layer of Aleene's Tacky glue with a foam brush over the mat board. Place glue side down on top of the fourth piece of fabric covered mat board making sure that it is centred correctly. Sandwich the stack between two sheets of wax paper and place a brick on top for at least 4 hours to help it dry flat. **Note:** Place a piece of quilters batting on top of the wax paper sandwich so that the beads, sequins and buttons will stay in place and not be crushed by the weight of the brick.



17. Make a 44" length of thin cording from DMC #8 Perle Cotton #498 christmas red dk. Starting at the top left glue cording around the outside of stitched design. **Note:** Be careful not to use too much glue. Stick straight pins into the cording to hold in place while the glue is drying. After the glue has dried tie the two ends of cording together in a knot. Cut the two ends of the cording 1 1/2" away from the knot to make tassels. Congratulations look at the beautiful flat fold that you have made!



Note: Not all 28ct linen is created equal. Measurements given in the instructions are based on our model and should be used as a guide. Measure your stitched designs to determine the correct measurements for your Flat Fold.

THEA'S DESIGNS AND ACCESSORY PACKS FROM THE VICTORIA SAMPLER WHOLESALE ORDERS ONLY: 1-888-658-3566

"Bling Tree Sampler"

©Copyright 2019 by Thea Dueck
The Victoria Sampler
8700 Aldous Terrace
Sidney, B.C. V8L 1L2
1-888-658-3566
Email: Info@victoriasampler.com

Wholesale Credits:

"Bling Tree" Leaflet and Accessory Pack from The Victoria Sampler
Silk Mori from Kreinik Mfg. Co. Inc. Parkersburg, MD
Silk floss from Needlepoint Inc., San Francisco, CA
Mill Hill Beads from Wichelt Imports, Stoddard, WI
Zweigart Cashel Linen from Fleur de Paris, Los Angeles, CA

The
Victoria
SAMPLER