

Susan by Fibre ⚡ood

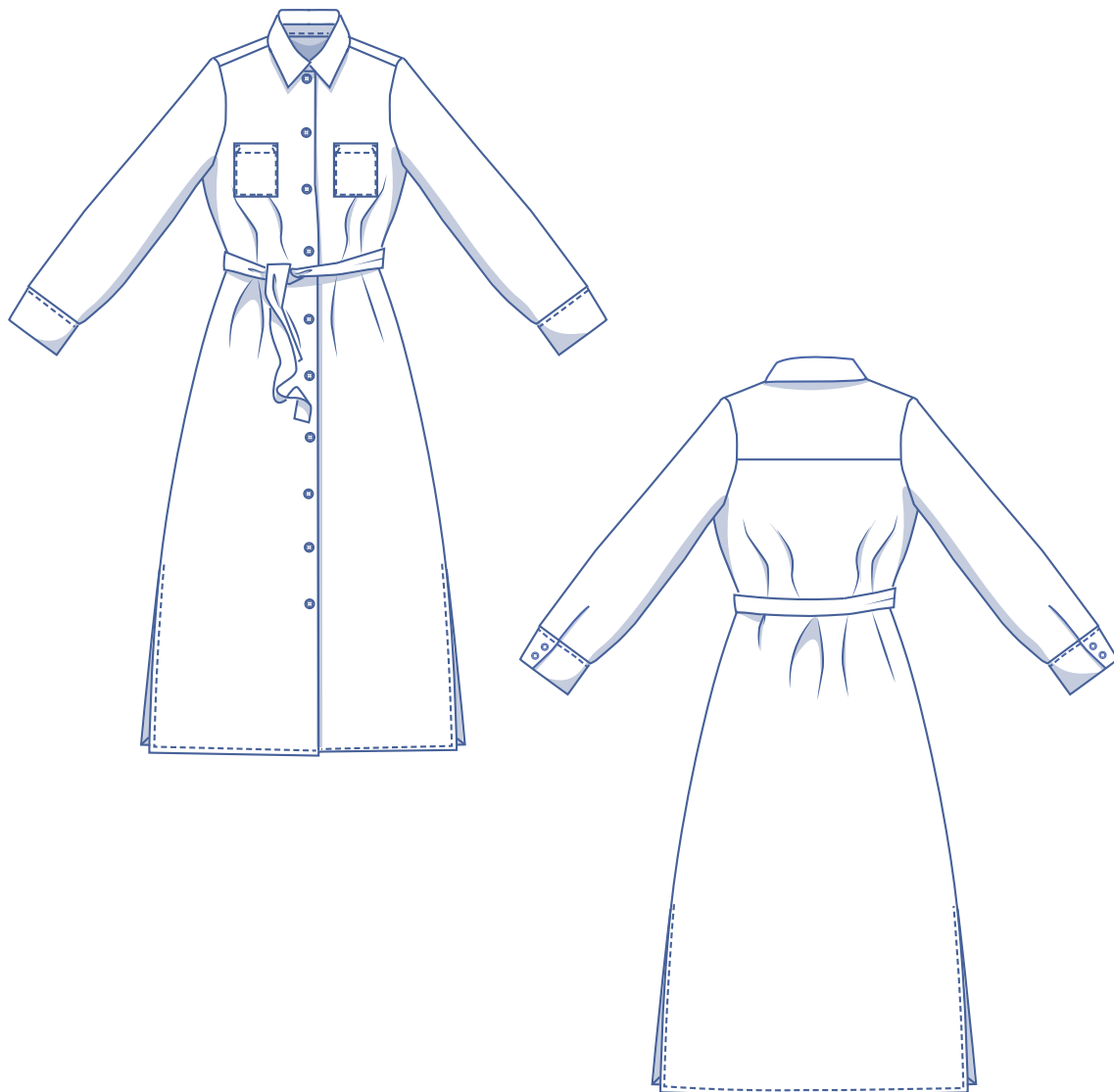


Susan by Fibre Mood



XS - XXXL

Stripes and a loose, ankle-length, long sleeve button-front shirt dress: it's the 'it' outfit of the spring season. The side slits on the Susan dress make for a lovely, airy effect, and a belt accentuates the waist just that little bit extra. This floor length dress is a stylish item that can be worn in all kinds of prints to brighten up your daily outfit.

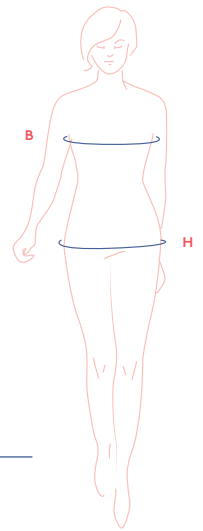


size chart

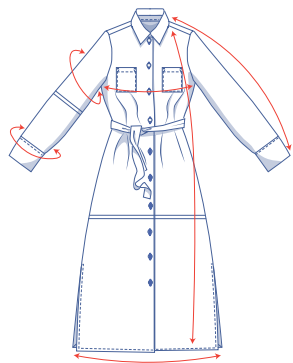
size	XS		S		M		L		XL		XXL		XXXL		
EU	32	34	36	38	40	42	44	46	48	50	52	54	56	58	60
UK	4	6	8	10	12	14	16	18	20	22	24	26	28	30	32
CS (cm)	76	80	84	88	92	96	100	104	110	116	122	128	134	140	146
H (cm)	86	90	94	97	100	103	106	109	115	120	125	130	135	140	145

Chest (CS): measure horizontally around the fullest part of the chest.

Hip (H): measure horizontally around the widest part of the lower body.



measurements (in cm)



size	XS	S	M	L	XL	XXL	XXXL
length	133.5	134.75	135.75	137	139.5	141	142.75
sleeve length*	74	75	76.75	78.5	81.25	83.5	85.75
1/2 bust**	47	51	55	59	64	70	76
1/2 hem circumference**	63.5	67.5	71.5	75.5	80.5	87	93
upper arm circumference	32.75	36.5	39.5	42.75	46	50.75	55.5
wrist trim circumference	29.25	30.75	32.25	33.75	35.25	37	38.5

** Including the shoulder length and wrist trim.

** Average of the front and back.

Compare the stated lengths to the measured or desired lengths. **Lengthen** or **shorten** the dress and/or sleeves by cutting the pattern pieces at the indicated double lines and then spreading the pattern pieces out X cm from each other or overlapping them where needed. Make sure that the CF and CB lines and the side seams are always straight.



IMPORTANT

Adjust the fabric to be used based on these alterations.

supplies



- Thread
- Threads (and crochet hook) to make the belt loops
- Buttons (Ø 1.1 cm): 13
- Iron-on interfacing: 40 cm
- Fabric: see table

fabric used (in cm) F collection	XS	S	M	L	XL	XXL	XXXL
striped fabric fabric width 140 cm	290	290	300	325	370	390	390

Comprehensive information about the fabrics in the Fibre Mood collection along with the accompanying fabric plans can be found [here](https://www.fibre mood.com/en/fabrics) or on www.fibre mood.com/en/fabrics.

fabric used (in cm)	XS	S	M	L	XL	XXL	XXXL
standard fabric fabric width 140 cm	290	290	300	325	370	390	390

The corresponding fabric plan can be found on the last page.

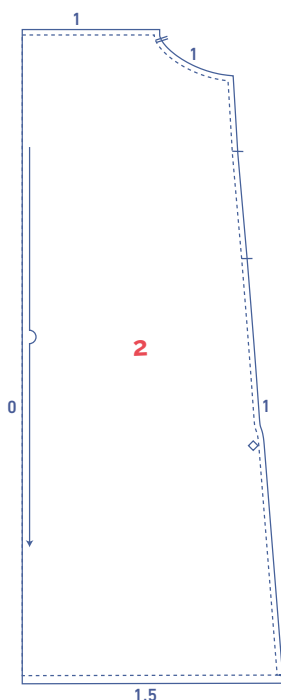
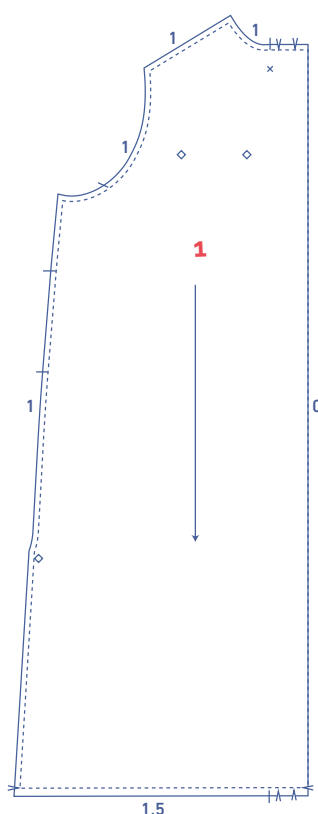
fabric advice



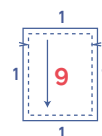
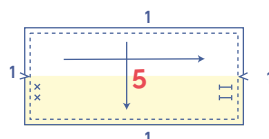
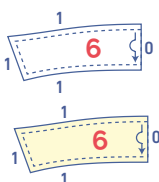
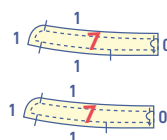
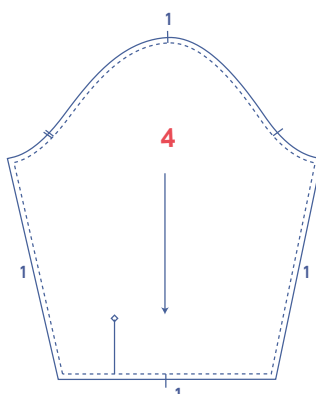
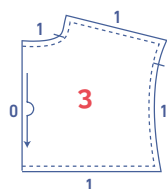
Use a woven fabric for the Susan dress. Opt for a light to medium-weight fabric with a fluid drape: viscose, for example. You could also use a light-weight cotton, although it will be slightly stiffer, and which will make the drape somewhat less fluid. Straighter body types can go for stiff fabrics and fabrics with a fluid drape, while fabrics with a fluid drape are most flattering on curvier body shapes. Comprehensive information about the fabrics in the Fibre Mood collection can be found [here](https://www.fibre mood.com/en/fabrics) or on www.fibre mood.com/en/fabrics.

pattern pieces & seam allowances (in cm)

To sew the garment as described in the instructions, you must draw the illustrated seam allowances around the paper pattern pieces before cutting them out.



1. front: 2x
2. back: 1x on fabric fold
3. yoke: 2x on fabric fold
4. sleeve: 2x
5. wrist trim: 2x
6. collar: 2x on fabric fold
7. collar band: 2x on fabric fold
8. bias arm split: 2x
9. pocket: 2x
10. belt: 1x, draw a rectangle that is 10x180 cm (for sz. XS-L) or 10x240 cm (for sz. XL-XXXL)



IMPORTANT

The pieces highlighted in light yellow are attached along the wrong side using iron-on interfacing.

Indicate crucial points on the outline of the pattern:

- Neatly nick the pattern paper and fabric at the places where a single vertical line (|) and double vertical lines (||) have been indicated.
- Cut a notch out of the fabric at the (V) symbol.
- Cut a small corner (V notch) out of the pieces that lie on the fabric fold to mark the middle of these pieces.

Mark crucial points on the pattern piece using needle and thread.

- Mark the location of the breast pocket, where the side slits intersect and where the sleeve slits intersect by marking the centre of the (◇).
- Always mark the button locations that are marked with an (X) by marking the centre with needle and thread (↖). The location of the top button on the front has been indicated on the pattern for you. Divide the distance evenly to determine the locations of the other buttons.
- Always mark the locations of the buttonholes (⇌) by marking these with two vertical dashes. The buttonholes on the wrist trim and collar band have been indicated on the pattern for you. Determine the location of the buttonholes on the front based on where the buttons are located.

sewing instructions



The method used to finish sewing the garment depends on the fabric used. The pieces are always sewn together with the right sides of the fabric matching exactly, unless stated otherwise.

FP front panel

BP back panel

RF right front

LF left front

CF centre front

CB centre back



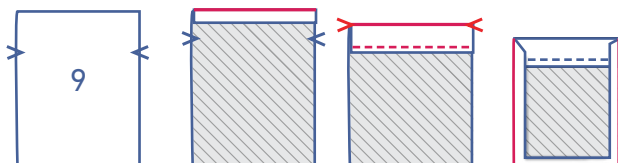
right side



wrong side

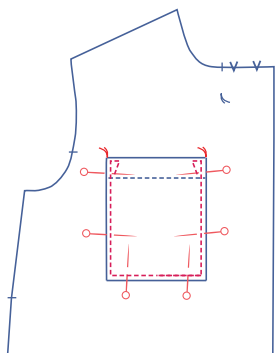


iron-on interfacing

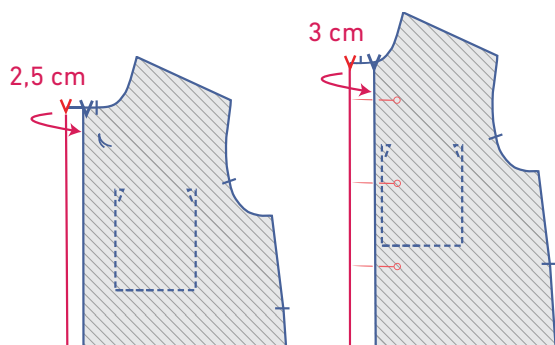


1

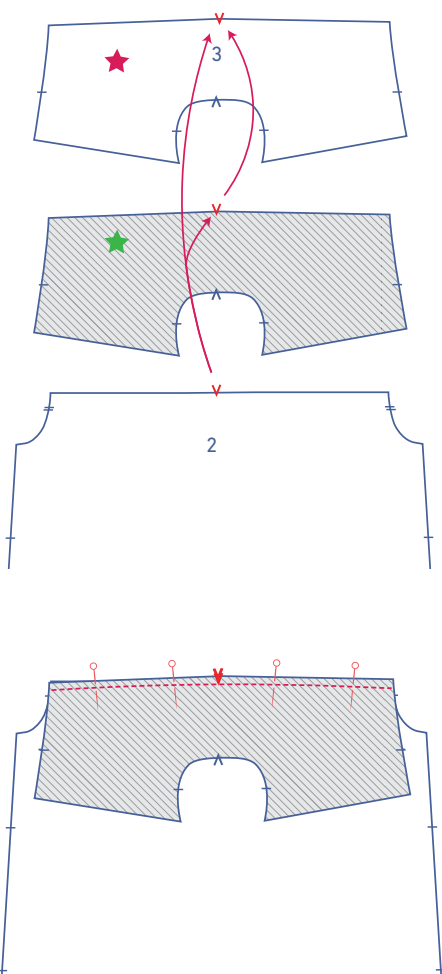
Start by pressing the top of the pocket (9) 1 cm over, followed by pressing it 2 cm over to where the V notches are located. Sew in place right next to the edge. Press the seam allowance of the remaining three sides over to the wrong side.



Pin the pocket at the indicated locations. Sew in place right next to the edge. At the top, sew reinforcement triangles on both sides.



Press the shaped facing of both front pieces over to where the V notches are located (first 2.5 cm and then 3 cm) and pin in place.

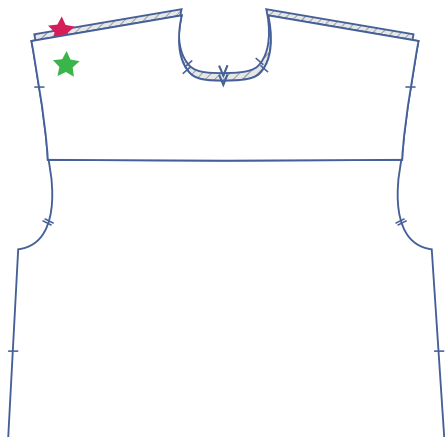


2

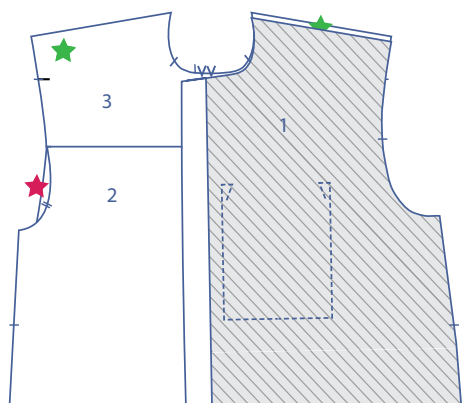
Lay the right sides of both **yoke** pieces (3) with the right sides facing together. Slide the back (2) between them with the right side facing up. The yoke that will be placed on top has been marked with a small green star, while the yoke that will be placed on the inside of the dress has been marked with a small red star.



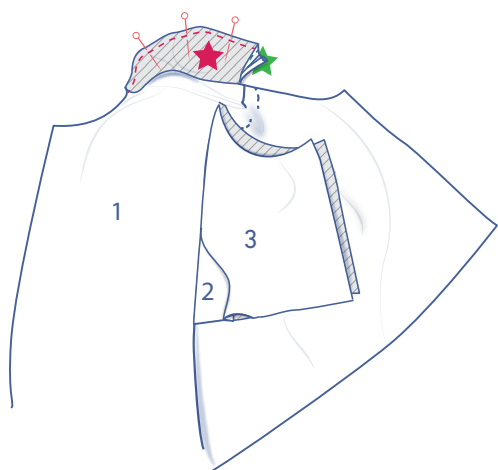
Pin and sew these three layers with the marks perfectly aligned.



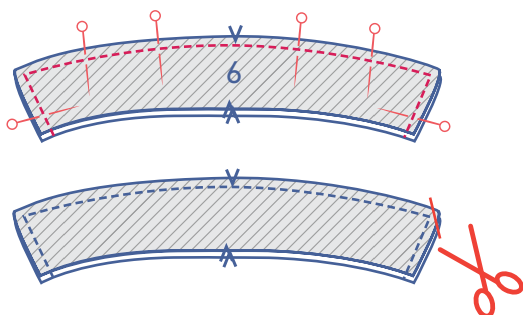
Fold both yoke pieces back up. The back is neatly positioned between the two pieces.



Place the shoulder seams of the front and those of the yoke marked with the small green star with the right sides facing together.

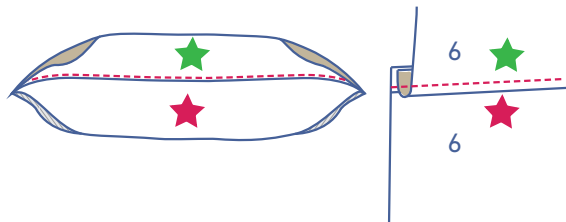


Now take the yoke shoulder seam that has been marked with a small red star and turn this over to the front, with the right side facing down onto the wrong side of the front. Neatly match the three raw edges and sew the layers together. Turn inside out. The shoulder seam of the front should be perfectly between both of the yoke pieces.

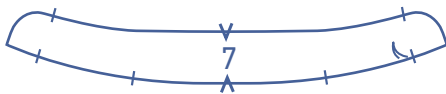


3

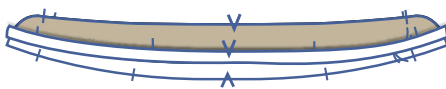
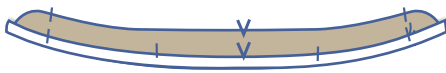
Pin and sew the contour of the collars (6) together, except for the bottom. Grade and trim the corner seam allowances. Turn inside out.



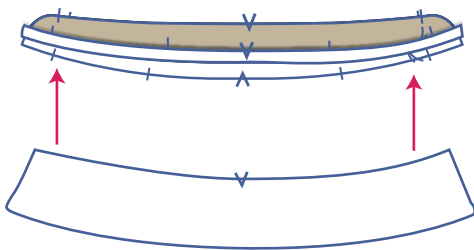
Fold both collar pieces open, so that the right sides are facing up. The top collar (= visible when you are wearing the dress) has been indicated with a small red star, while the sewn undercollar has been indicated with a small green star. Fold the seam allowance towards the sewn undercollar (small green star). Sew the undercollar at 2 mm from the seam through all layers (undercollar + seam allowance). Next, neatly press the seams together.



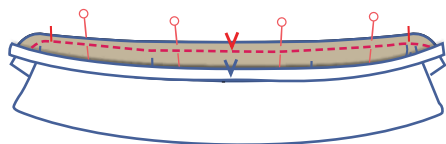
Press one of the two collar bands (7) at the bottom 1 cm over to the wrong side.



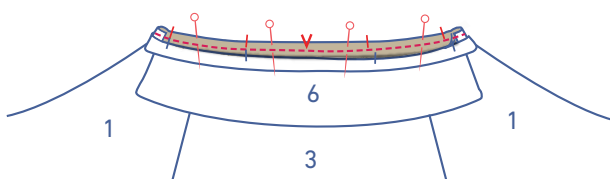
Stack both collar bands with the right sides facing together. The collar band with the pressed over bottom should be on top.



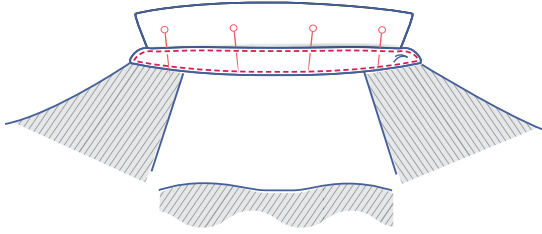
Slide the collar between the two collar bands and align the raw edges. The sewn undercollar should be at the bottom.



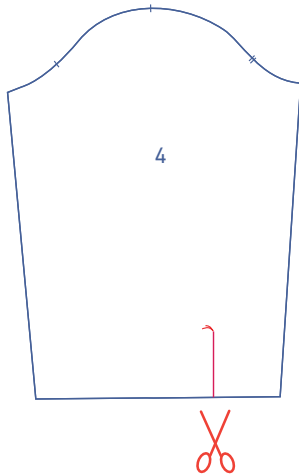
Pin and sew the pieces together. Grade and trim the seam allowances in the curves. Turn the collar bands inside out.



Pin and sew the bottom of the collar band that has not been pressed over to the neckline along the right side of the dress.

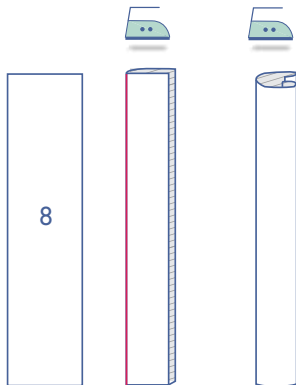


Fold the collar band with the bottom that has been pressed over to the wrong side of the dress neckline. The fold line should lie just on the previous stitching. Pin and sew in place. Finish the stitching around the collar band.



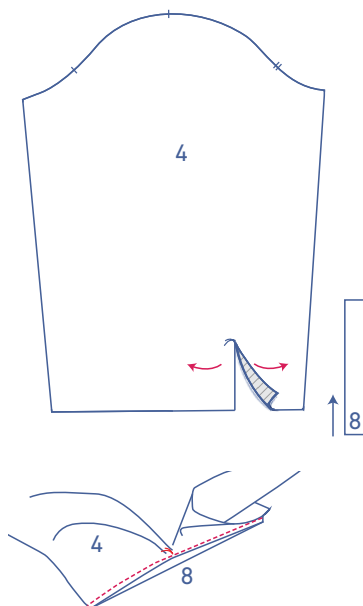
4

Cut the sleeve (4) on the indicated line up to the basting thread.

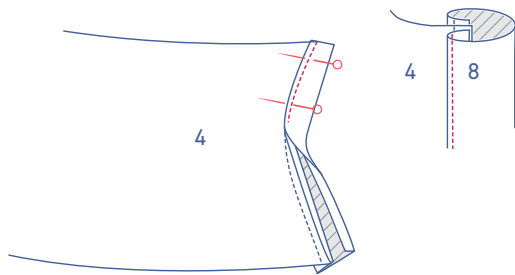


Press the bias arm split to the front as follows:

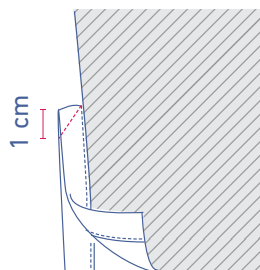
- Start by pressing the bias in half lengthwise all the way down.
- Next, press both of the long sides 0.75 cm onto the wrong side.



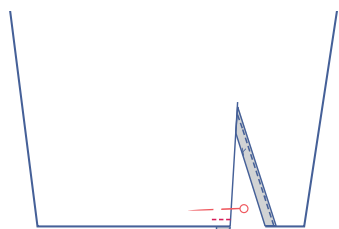
Open the bias arm split out wide so that you end up with a single straight line. Slide the bias arm split under the sleeve with the right side facing up. Match the raw edges together and pull the sleeve a bit to the side at the basting thread. Sew a parallel line .5 cm from the raw edge. Only a few fabric threads have been sewn in place at the basting thread.



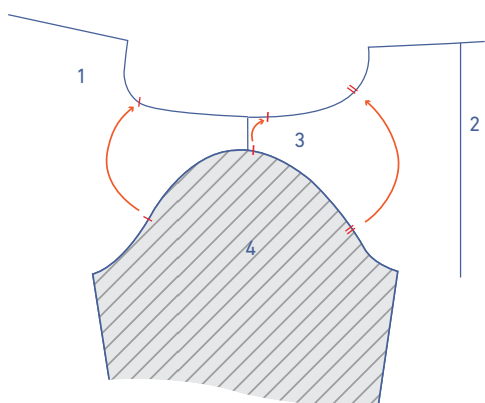
Fold the bias towards the right side of the sleeve and lay the fold line directly onto the previous stitching. Sew in place right next to the edge.



Fold the sleeve in half lengthwise, with the right side of the fabric facing inwards. Sew the tops of the biases together. Sew a diagonal line starting from the corner. Fold the sleeve back open.

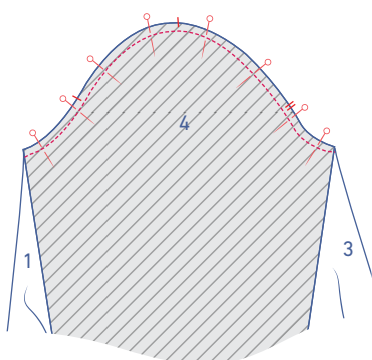


Fold the bias over to the wrong side of the sleeve to the sleeve front (this is recognisable at the widest part of the sleeve hem) and sew the bias in place 0.5 cm from the bottom.

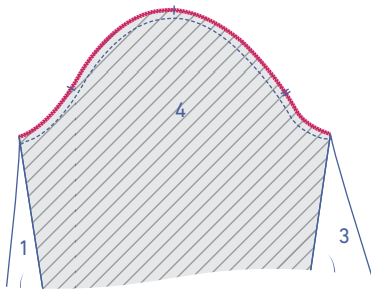


5

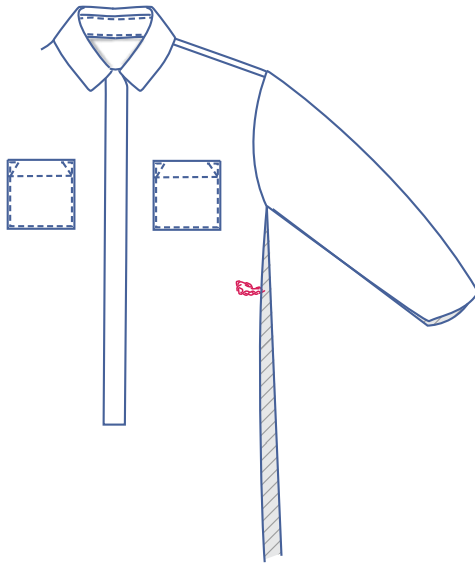
Pin the top of the sleeve (3) (= the sleeve cap) to the armhole with the corresponding markings matching exactly. The single nick marks the front, while the double nick marks the back. The top-most single nick lines up with the yoke's single nick indicating the shoulder.



Distribute the excess fabric evenly between the nicks. Sew in place.



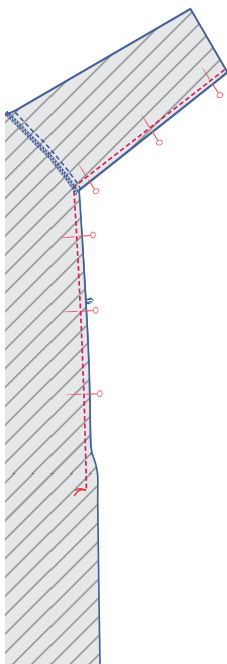
Finish the raw edges together using an overlock stitch.



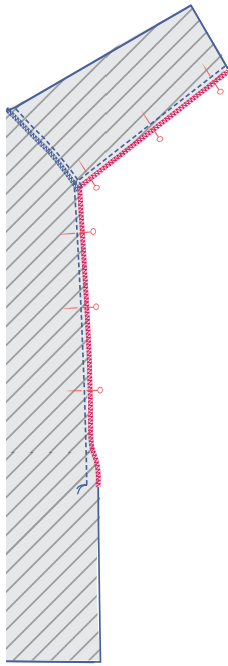
6

Use fine yarn to crochet a chain stitch, making two chains of approximately 12 cm to create each belt loop in the side seam.

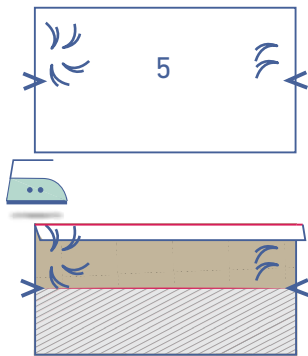
Attach the belt loop to the side seam of the front as shown in the drawing and sew in place.



Fold the sleeve and the dress in half with the right side of the fabric facing inward. Pin and sew the side and underarm seams up to the basting thread.

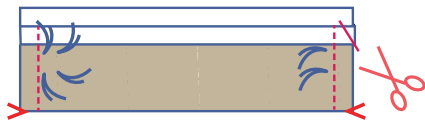


Finish the raw edges together using an overlock stitch.

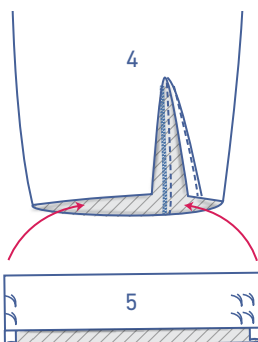


7

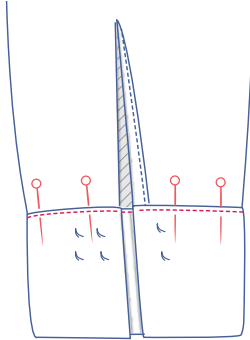
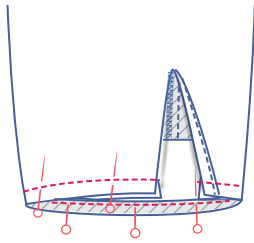
Press 1 cm along the long side of the wrist trim (5) seam allowance (at the half where the buttons and buttonholes are located) over to the wrong side.



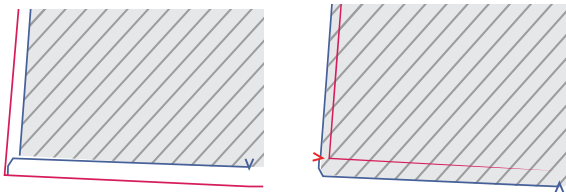
Fold the wrist trim in half lengthwise to where the V notches are located with the right side of the fabric faced inwards. Sew the short sides. Trim the seam allowance and turn inside out.



Slide the wrist trim into the sleeve. Pin and sew the pressed over raw edge of the wrist trim to the bottom of the sleeve along the wrong side of the sleeve.

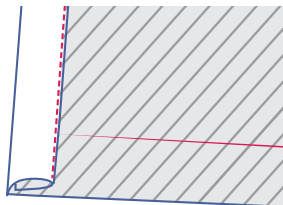


Fold the wrist trim towards the right side of the sleeve and lay the fold line (of the pressed over seam allowance) directly onto the previous stitching. Sew in place next to the edge.

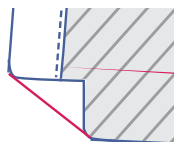


8

Press the hem and side slits 1.5 cm over, then fold back open.

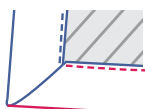
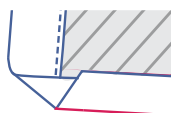


Fold the raw edge to the side slit against the pressed fold line and fold a second time. Sew in place right next to the edge.



Fold the tip (corner) of the hem inwards against the pressed fold line. Fold the raw edge of the hem onto the pre-pressed fold line and then fold over a second time. Sew in place right next to the edge.

Use this method to continue finishing the hem and side slits.

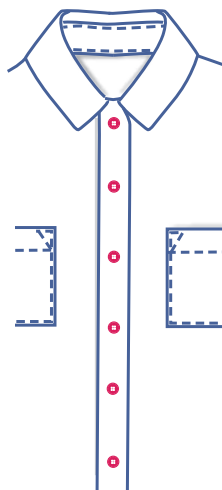




9

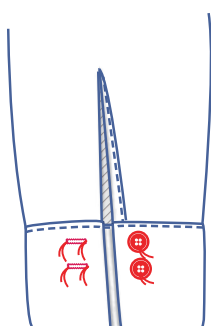
Fold the belt in half lengthwise and sew the three sides, but be sure to leave an opening so that the belt can be turned inside out.

Turn inside out and sew the opening in place.



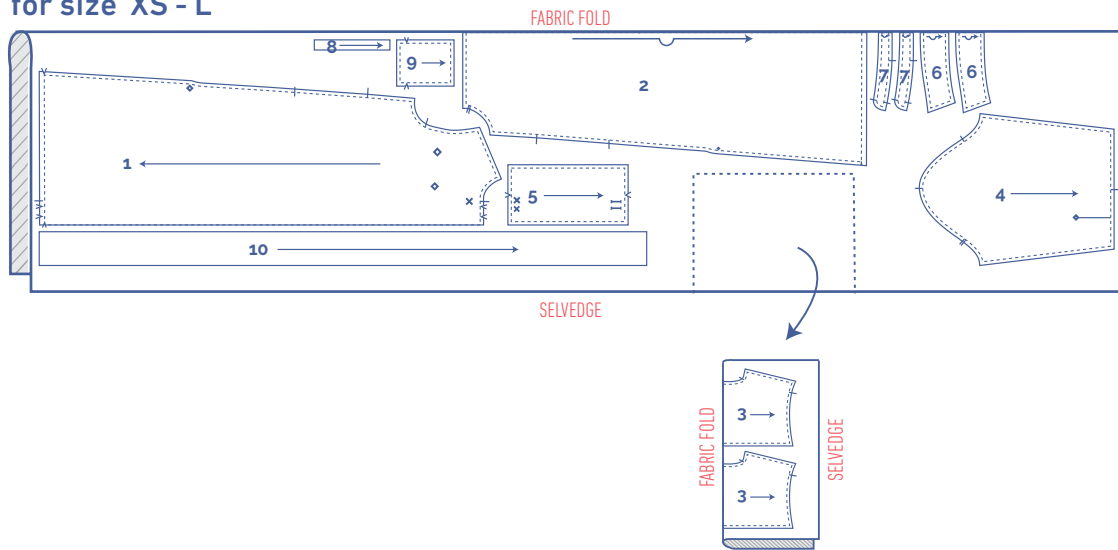
10

Sew all the buttonholes and buttons on.



fabric plan for fabric 140 cm wide

for size XS - L



for size XL - XXXL

