

Posterior nasal septum

Hard palate (Palatine bone)

Hard palate (Maxilla)

Vomer bone

Greater wing
(Sphenoid bone)

Ovale foramen

Spinosome foramen

Carotid canal

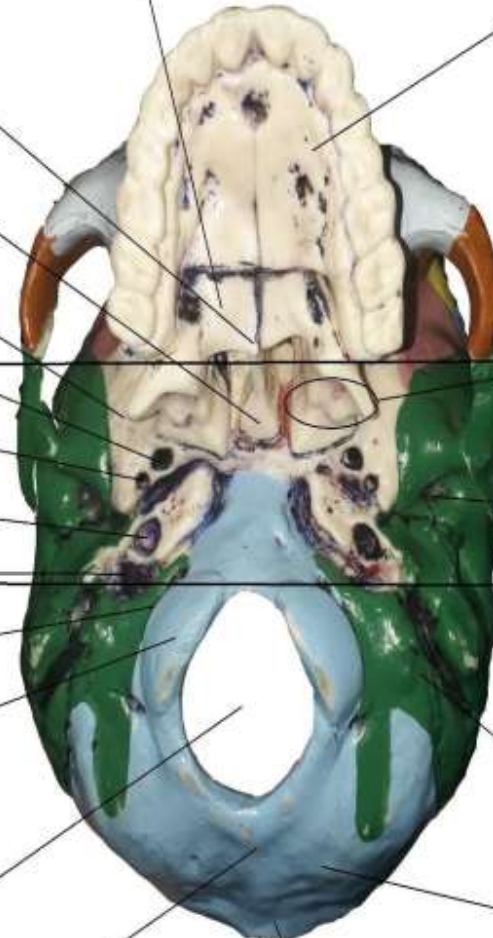
Jugular foramen

Hypoglossal canal

Occipital condyle

Magnum foramen

External occipital crest



Anterior Part

Palatine process

Middle Part

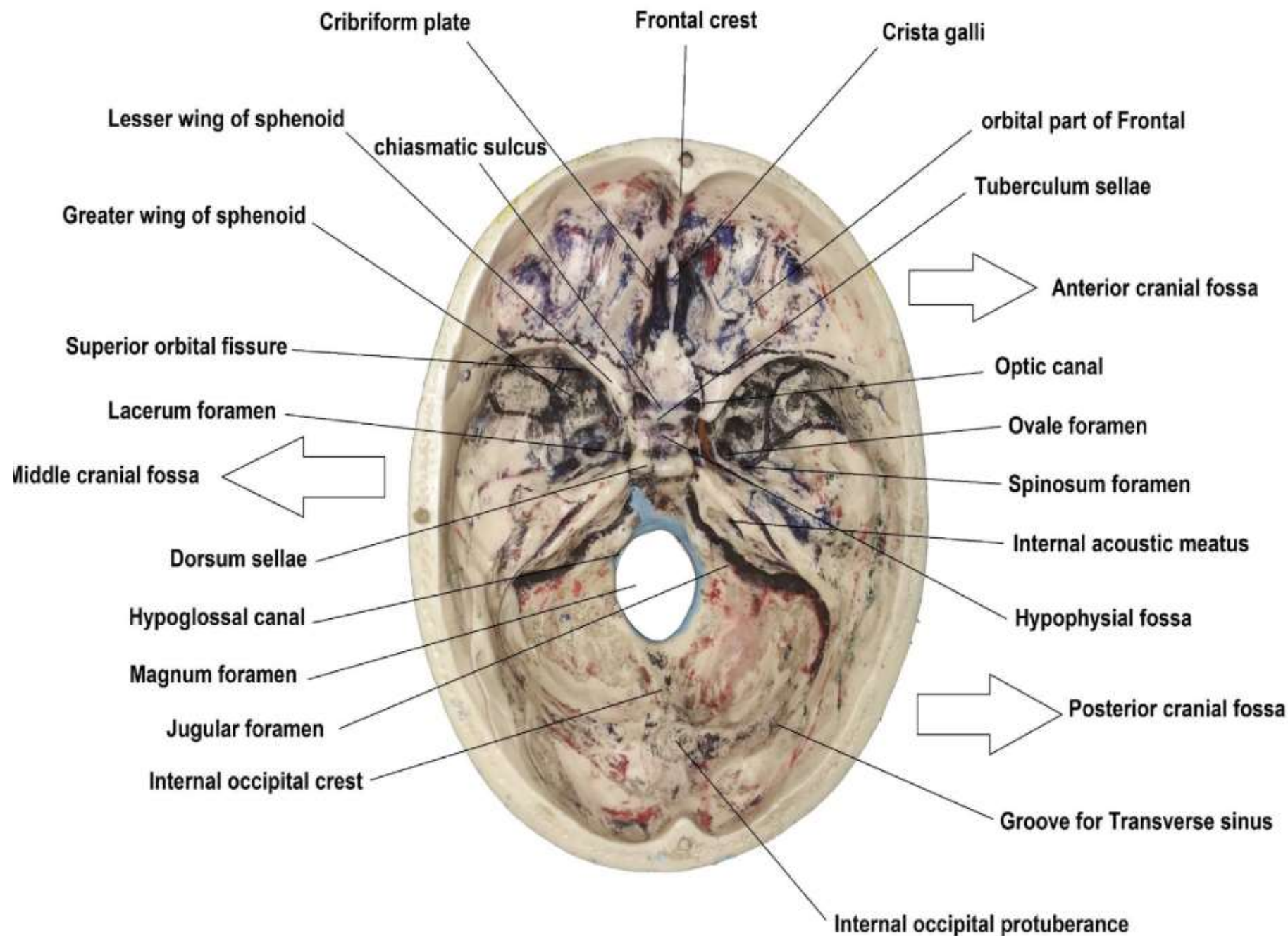
External acoustic meatus

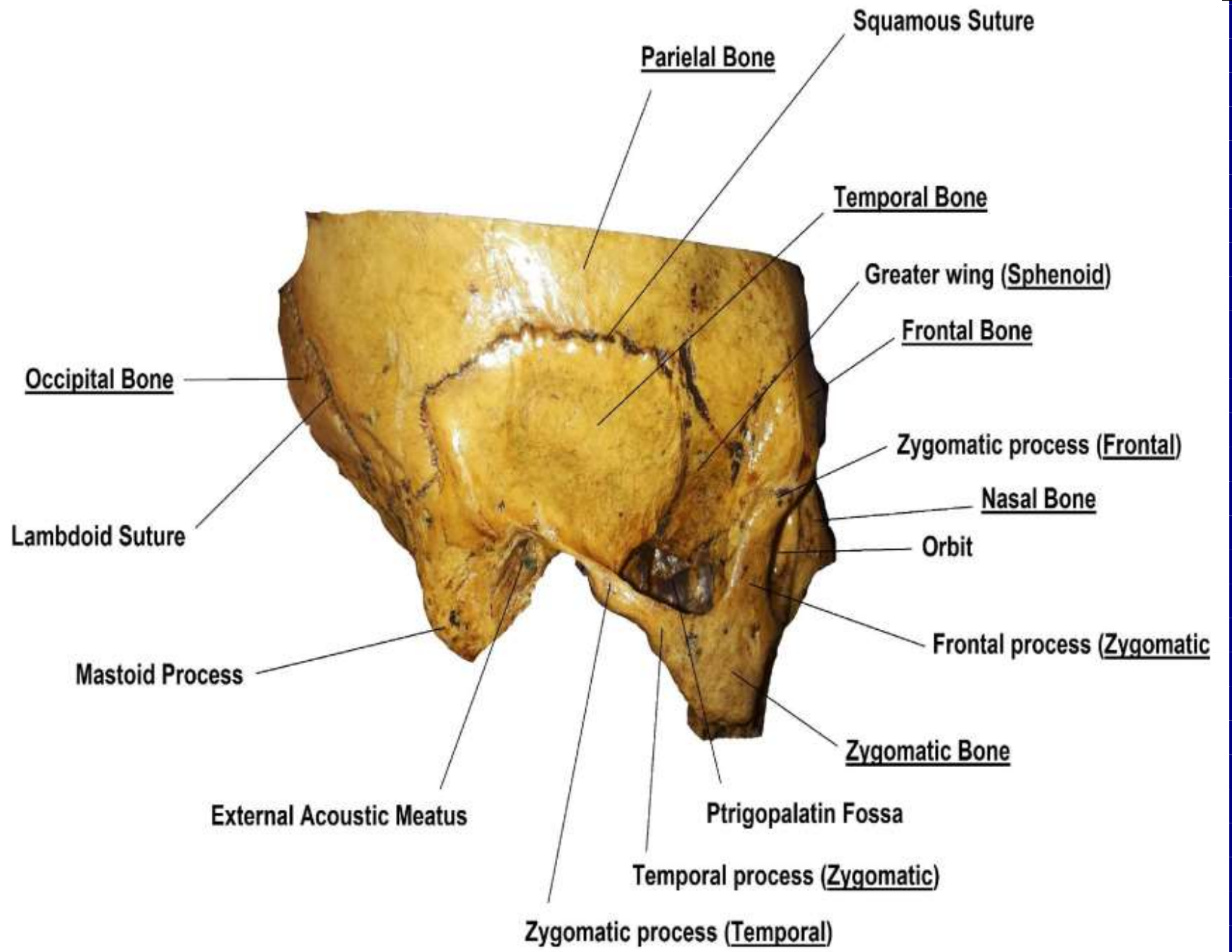
Posterior Part

Temporal bone

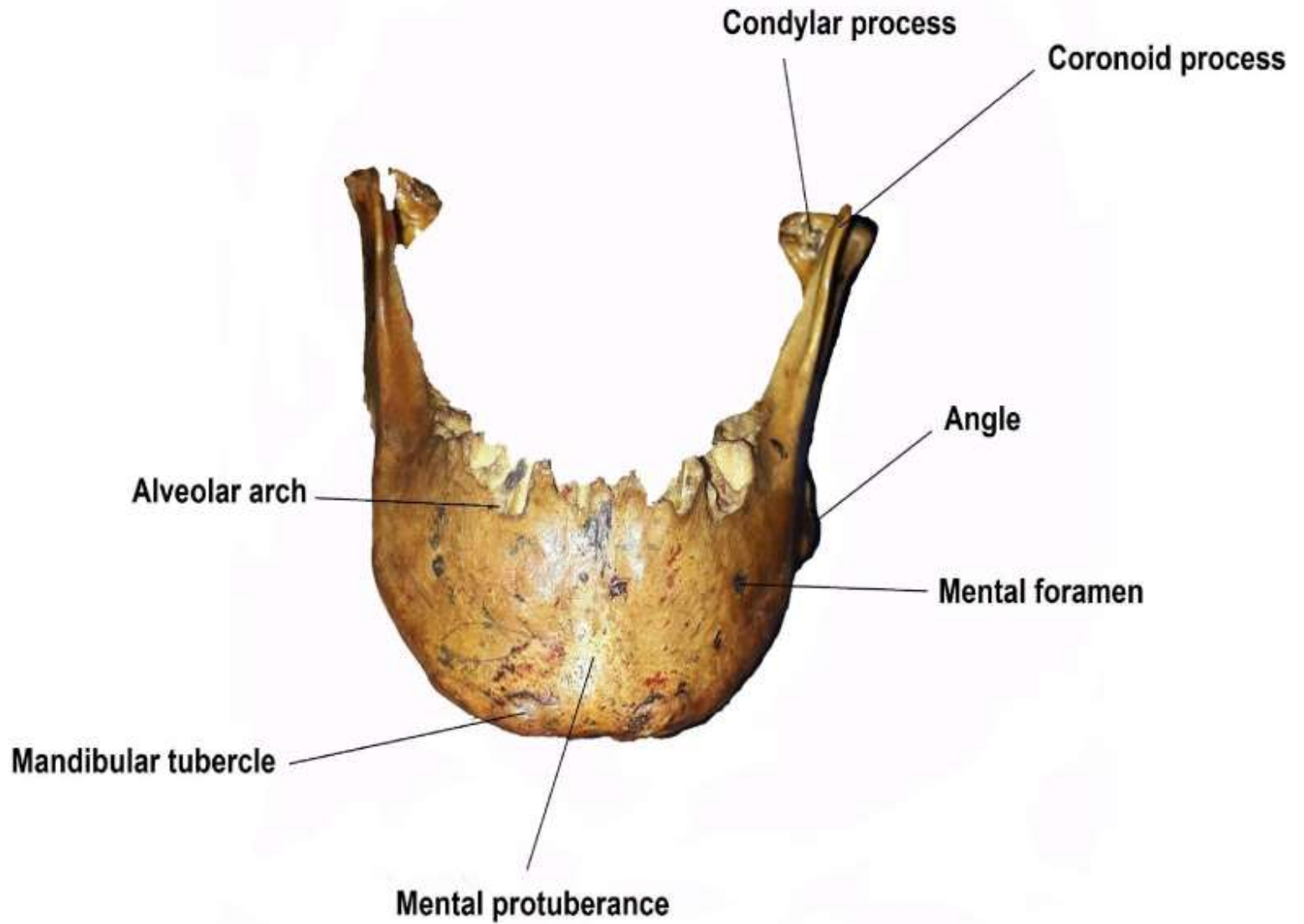
Occipital bone

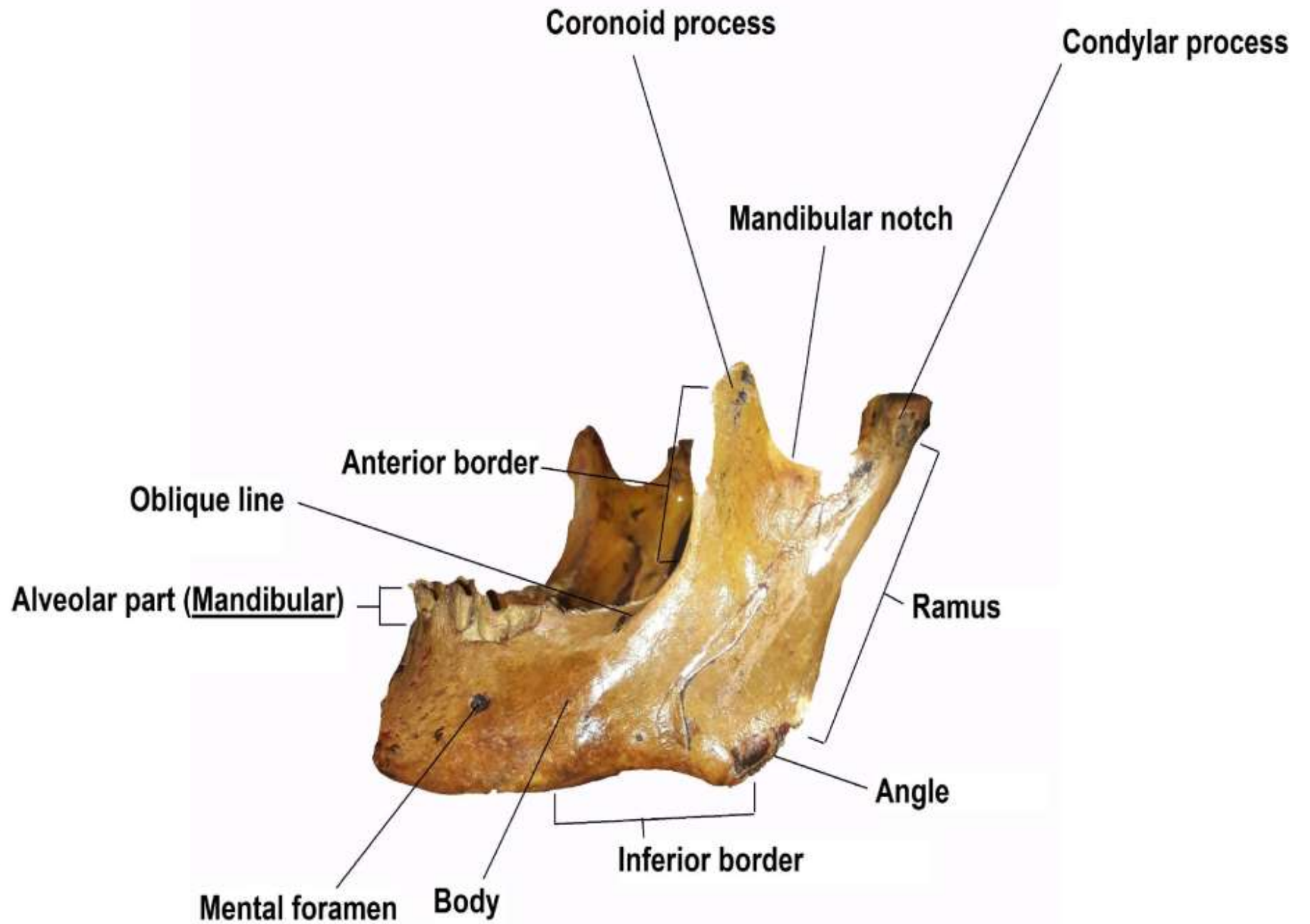
External occipital protuberance

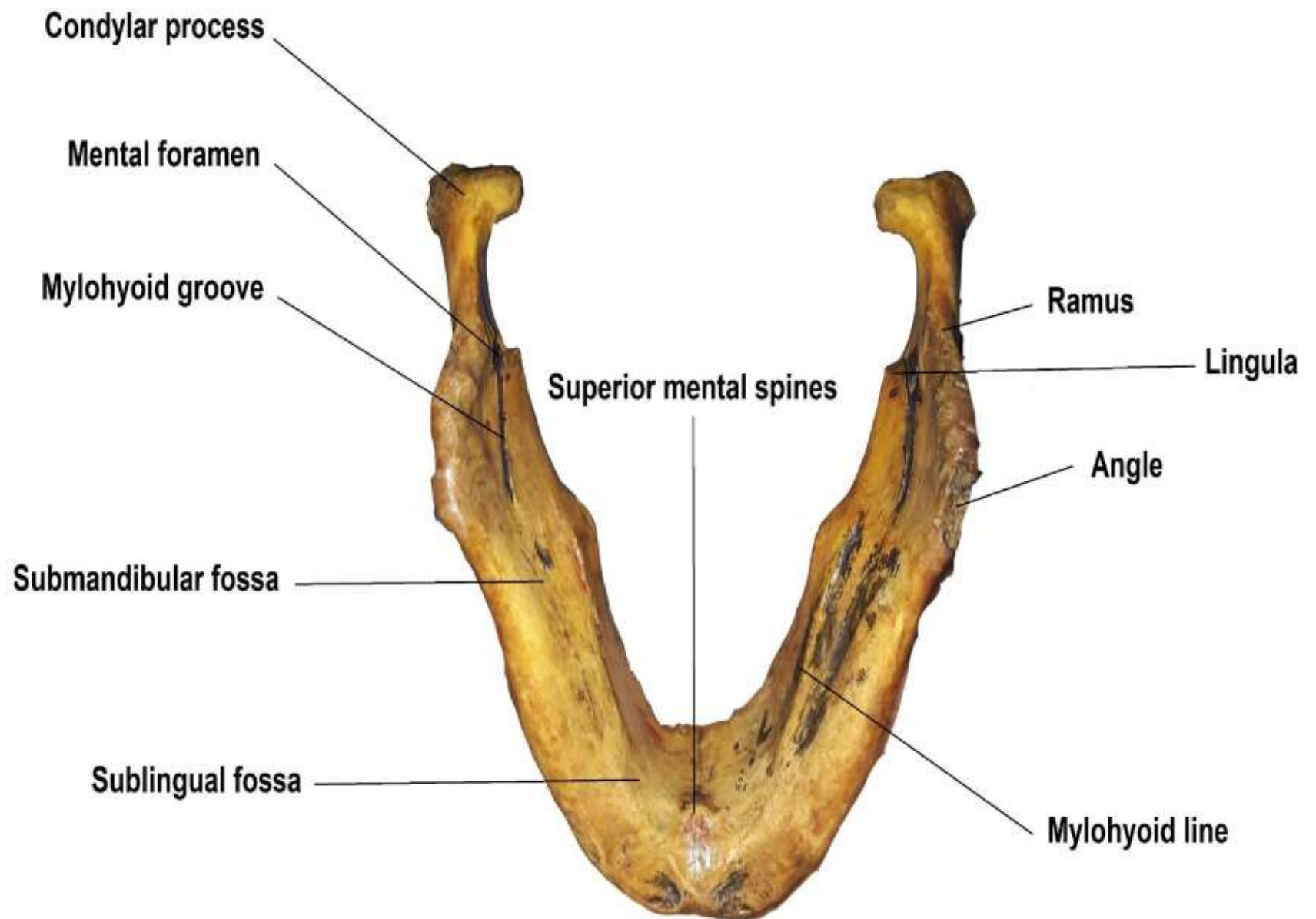


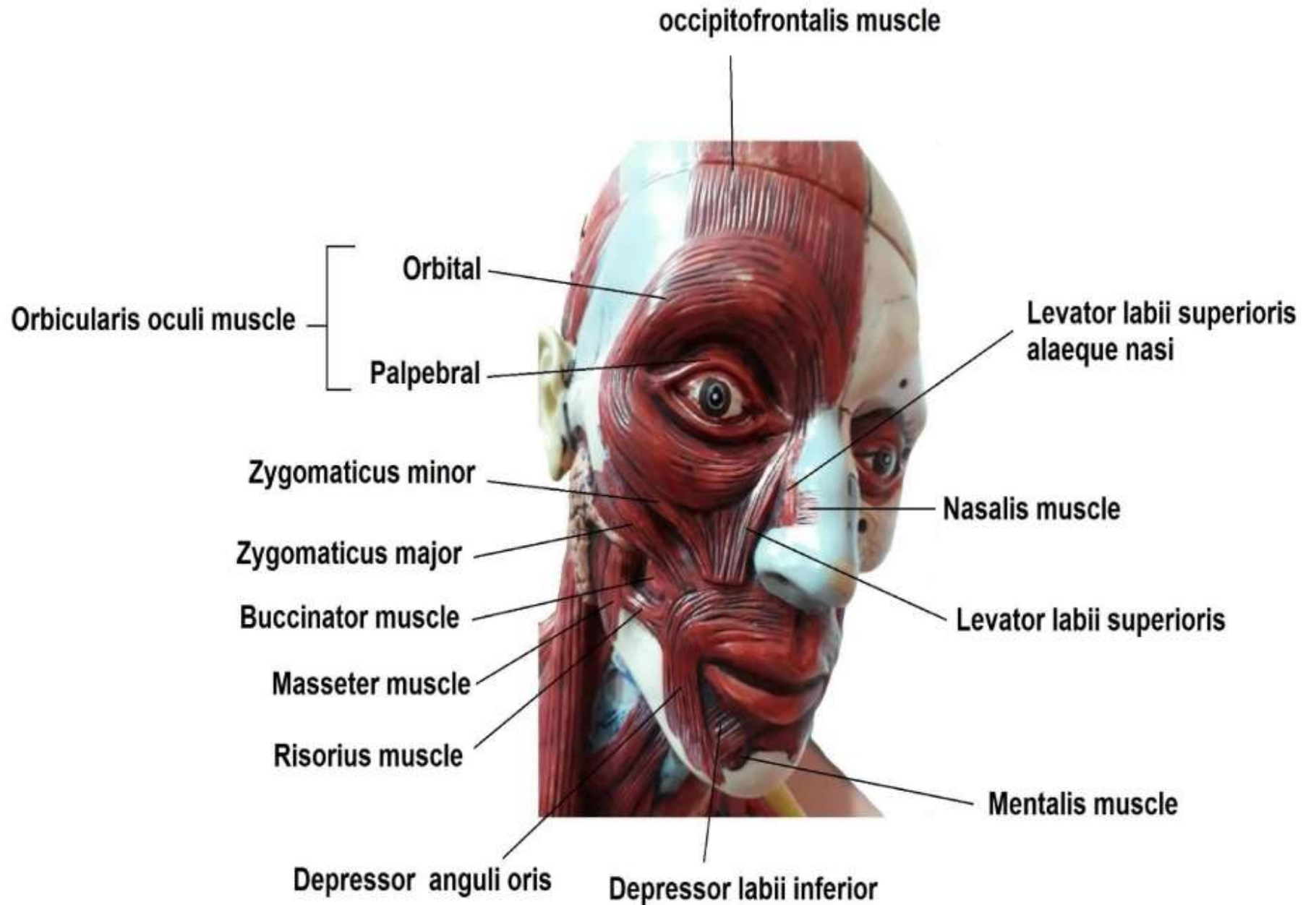


@anatomy_acland







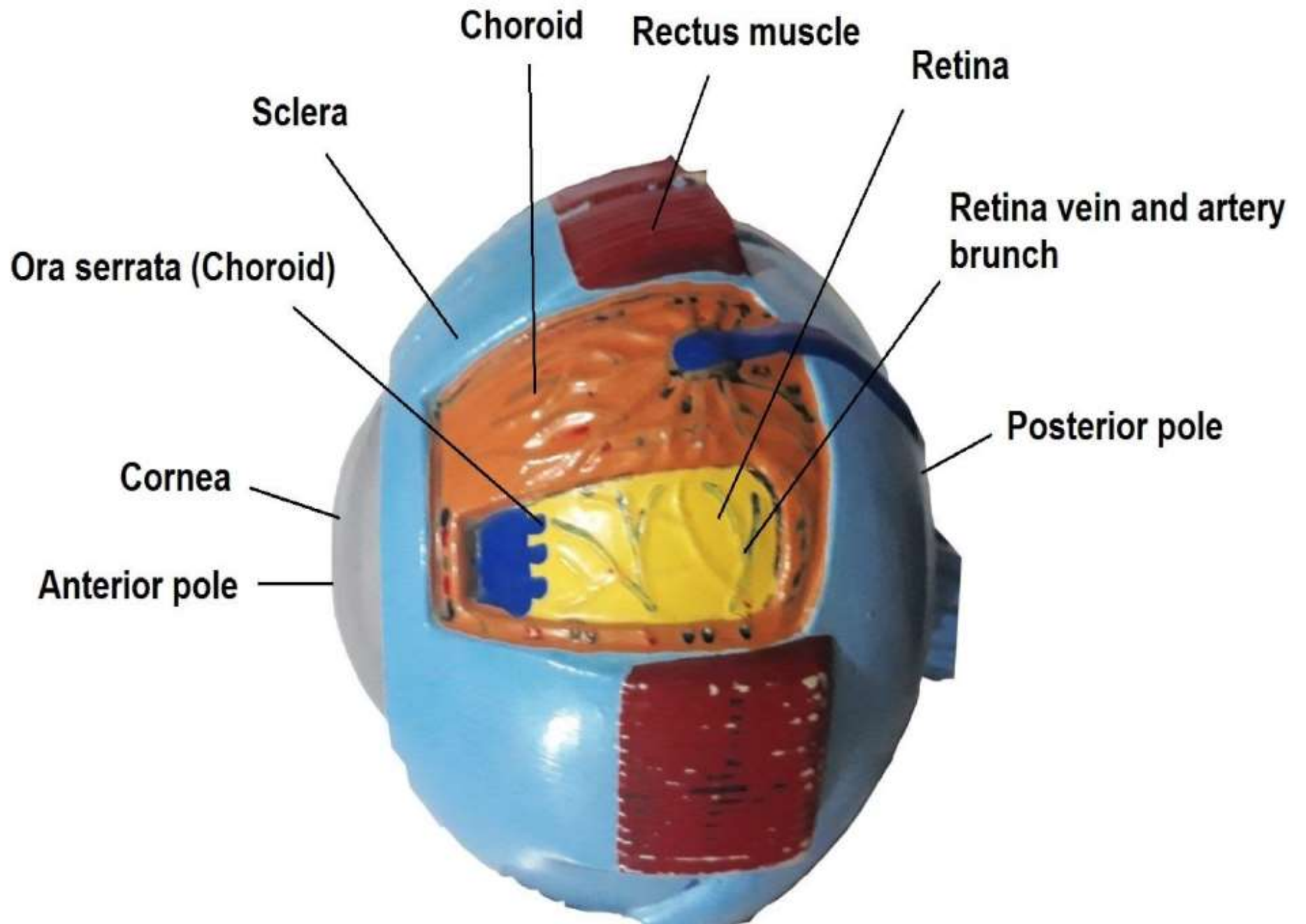


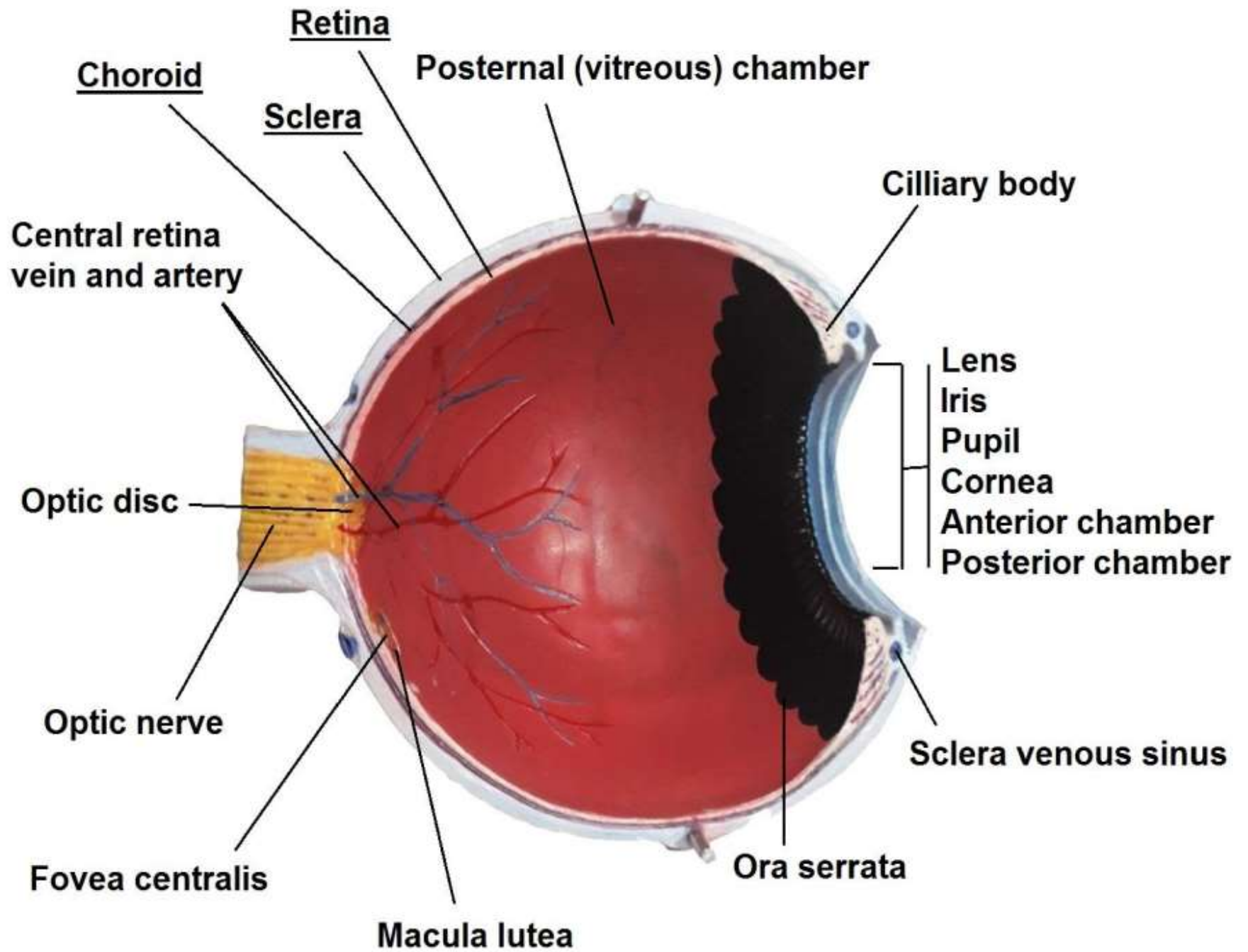


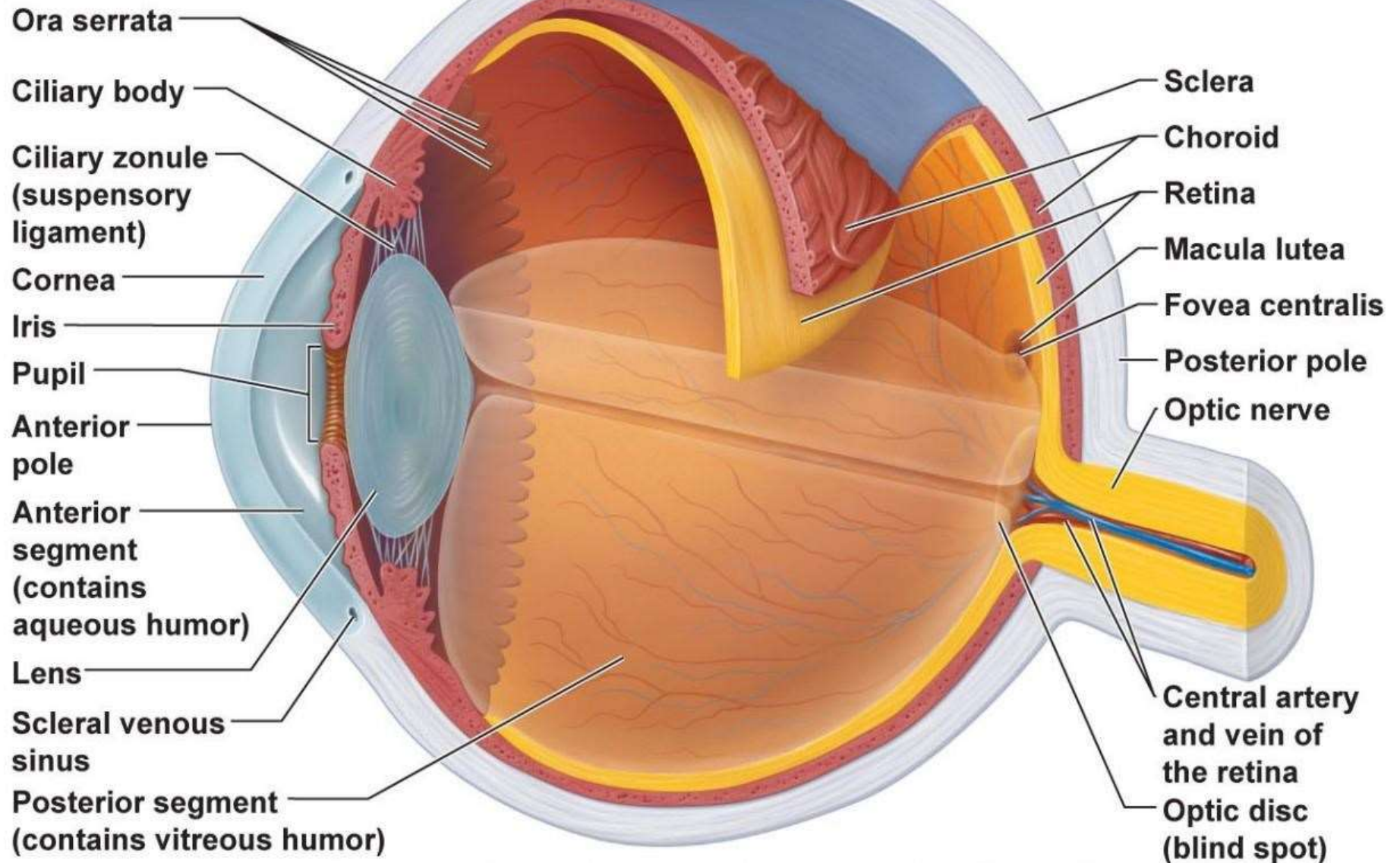
Orbicularis oris

Buccinator muscle

Levator anguli oris

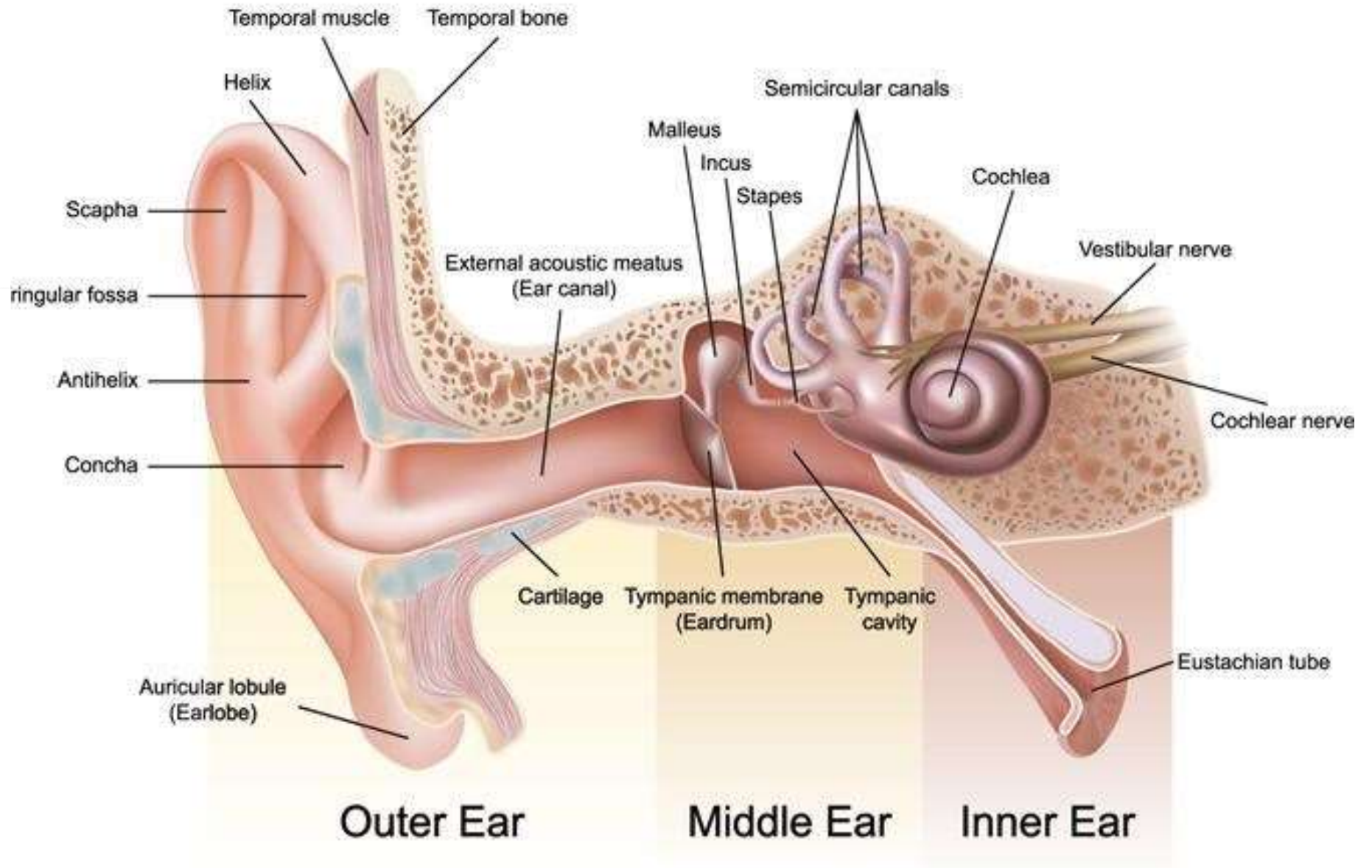


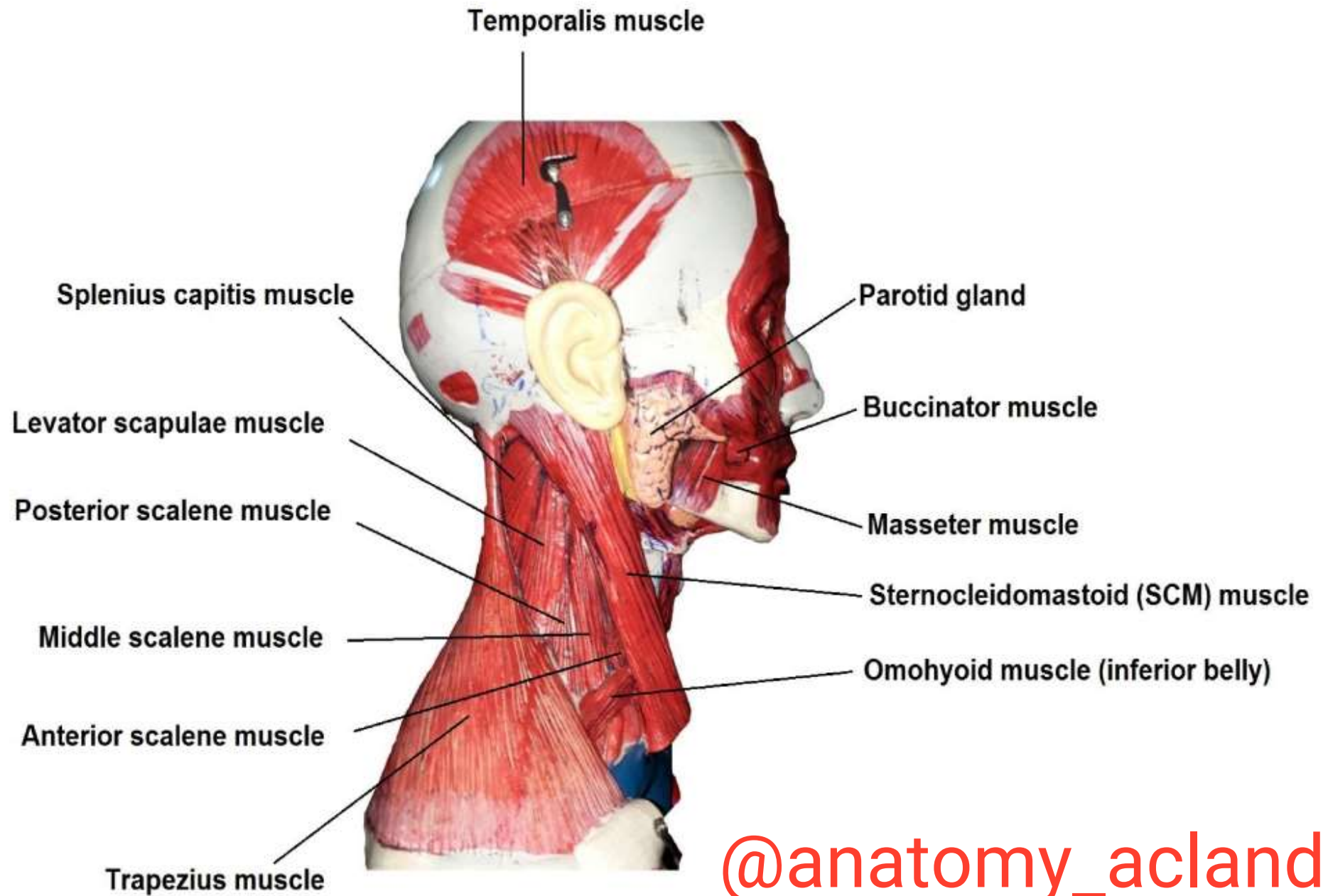


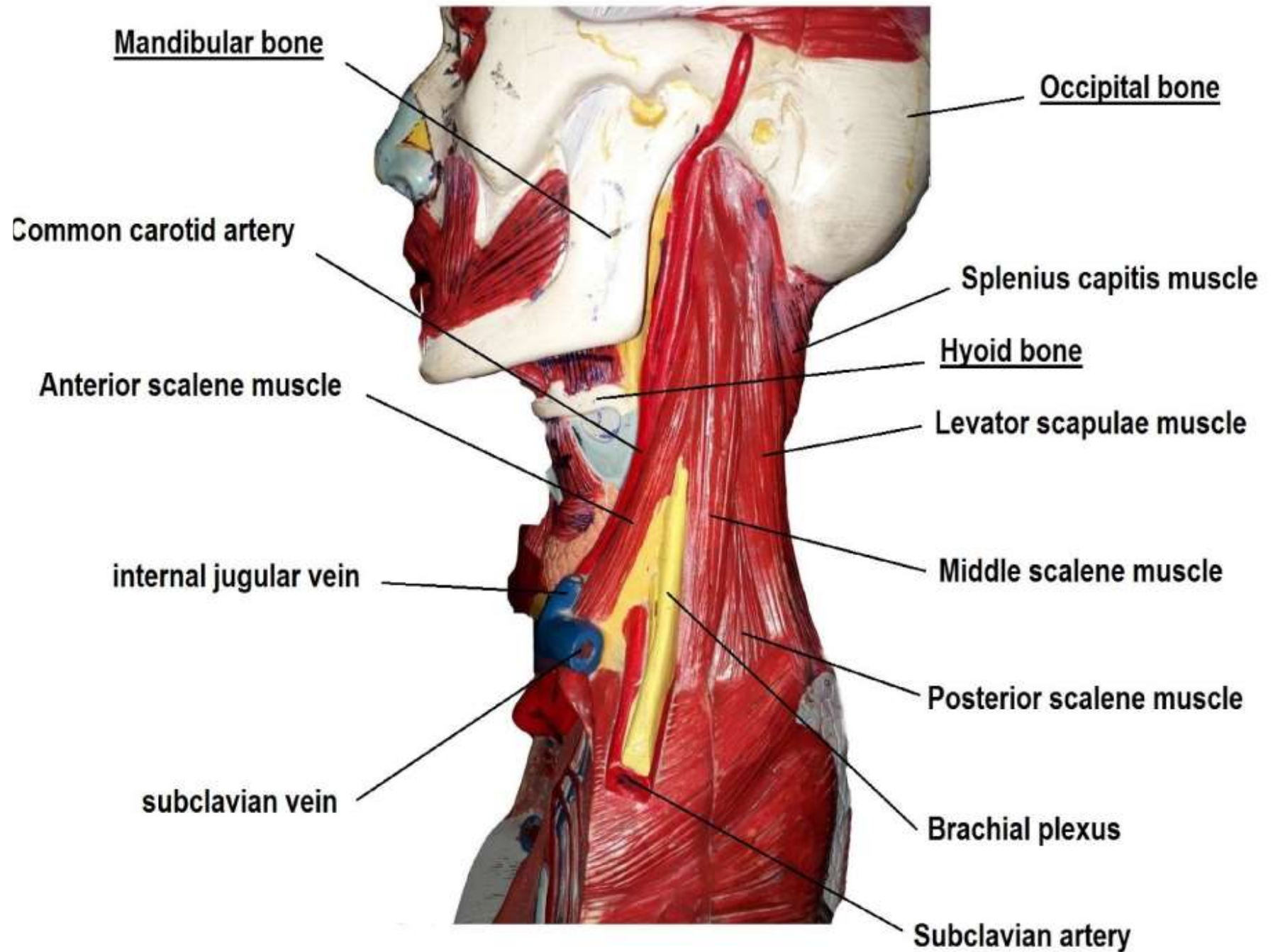


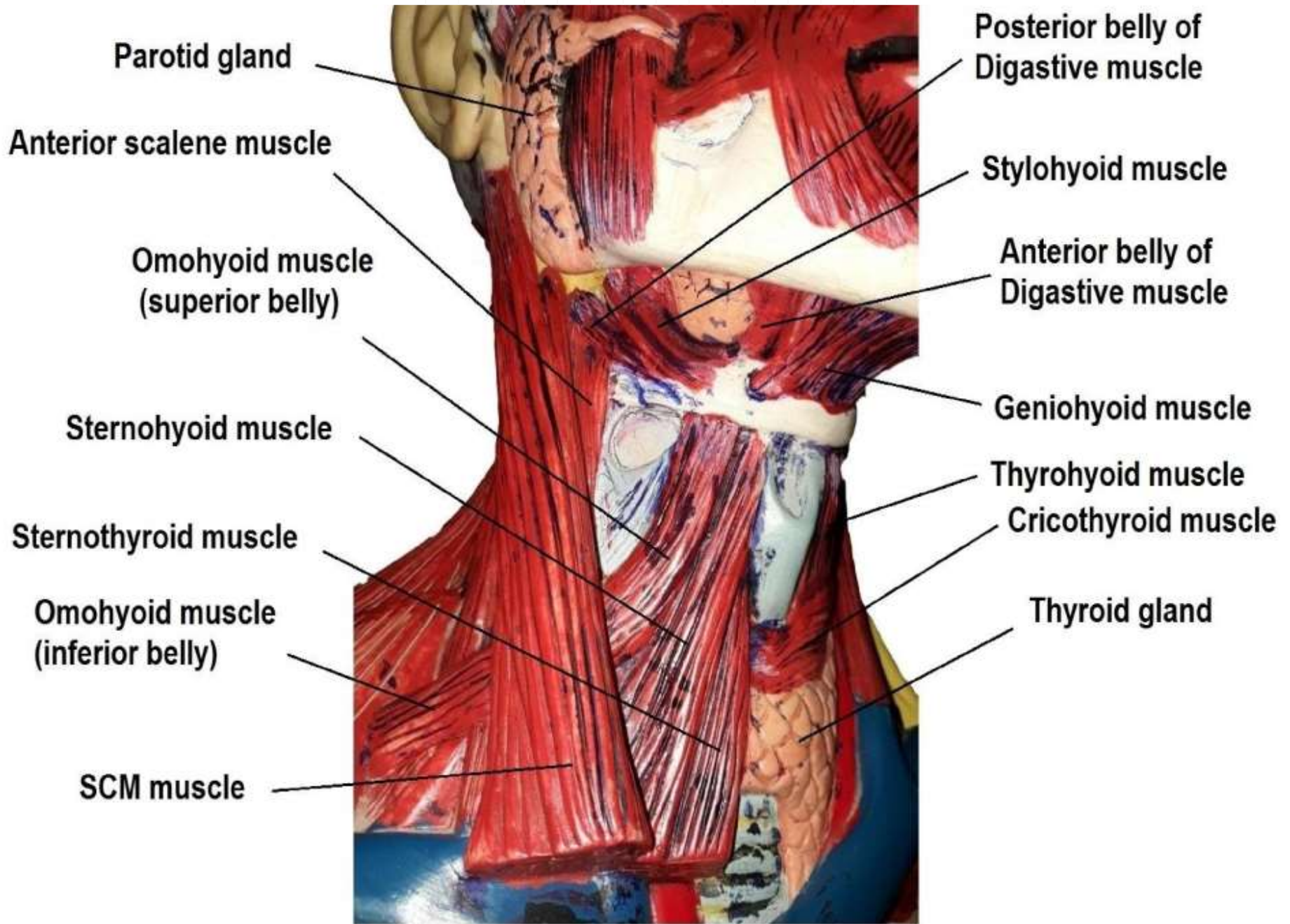
(a) Diagrammatic view. The vitreous humor is illustrated only in the bottom part of the eyeball

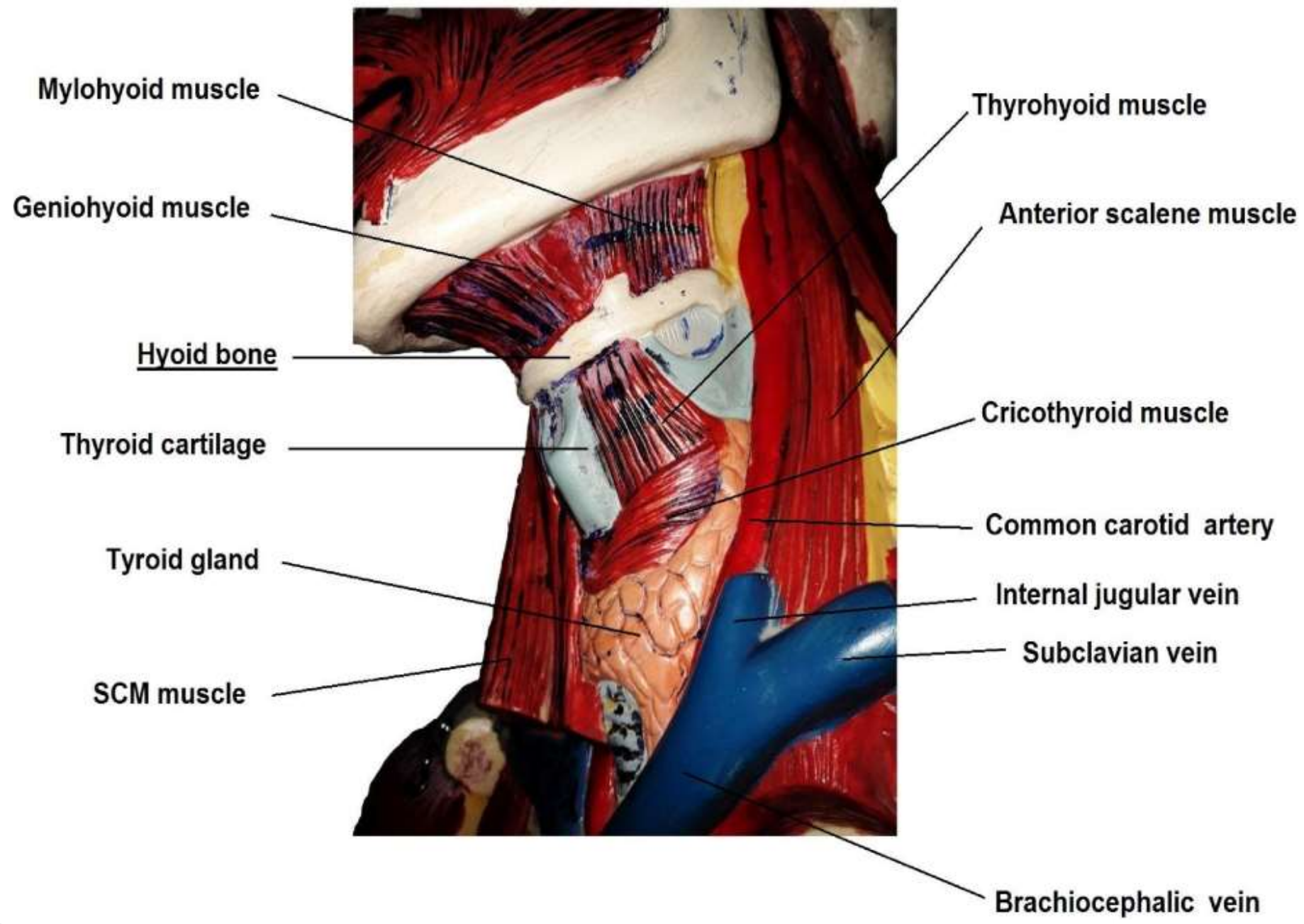
Anatomy of the Ear

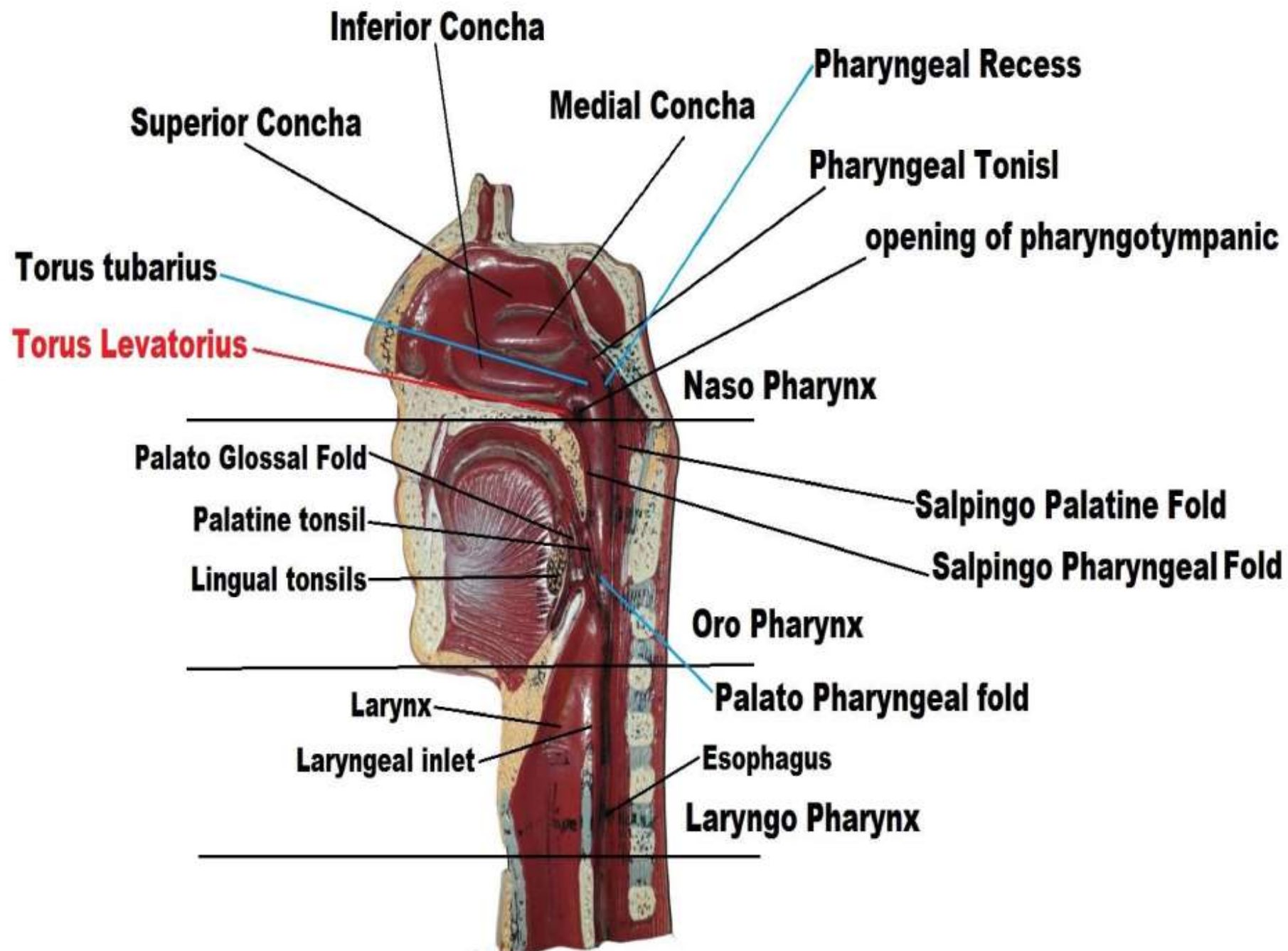




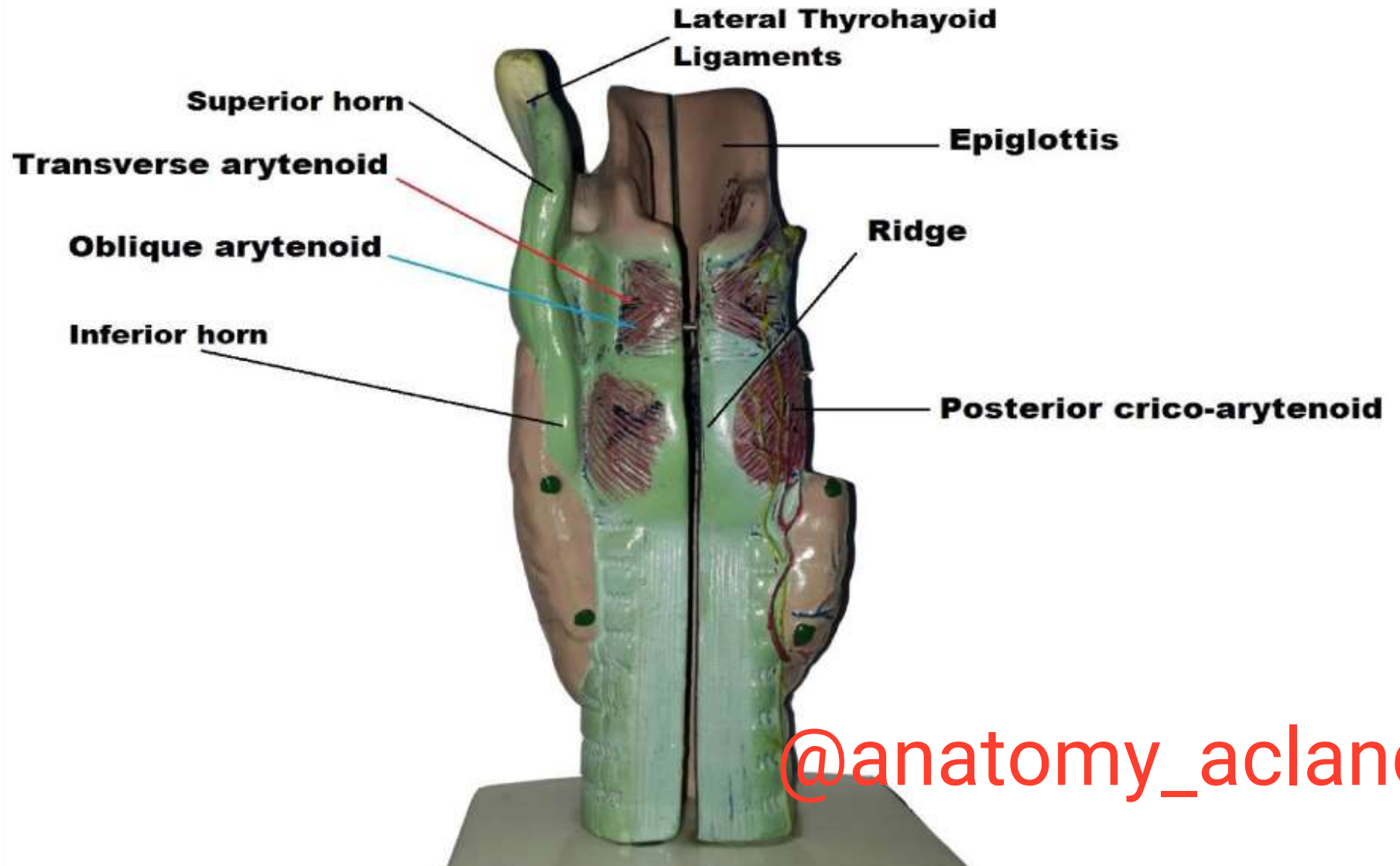






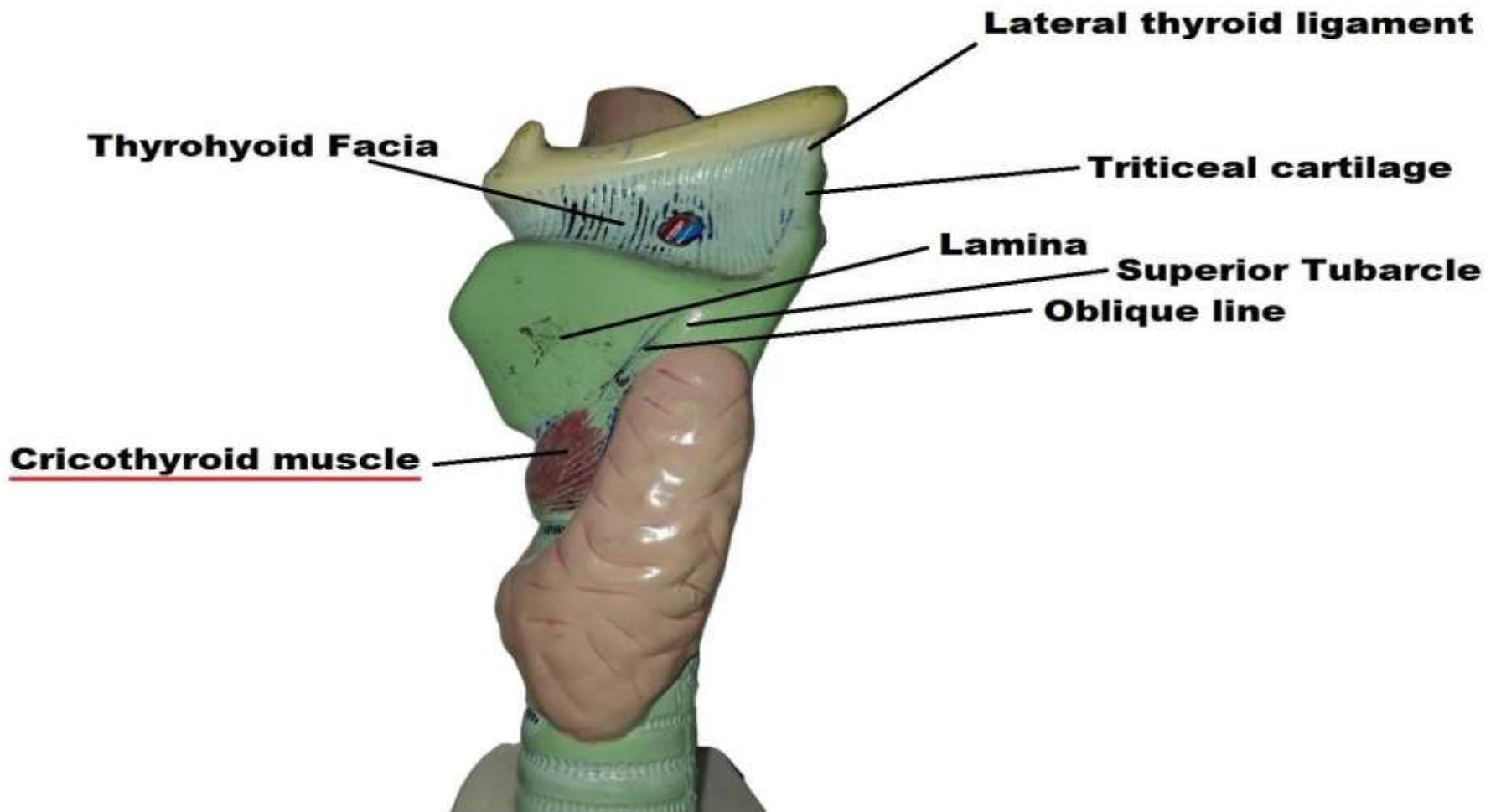


posterior surface of larynx

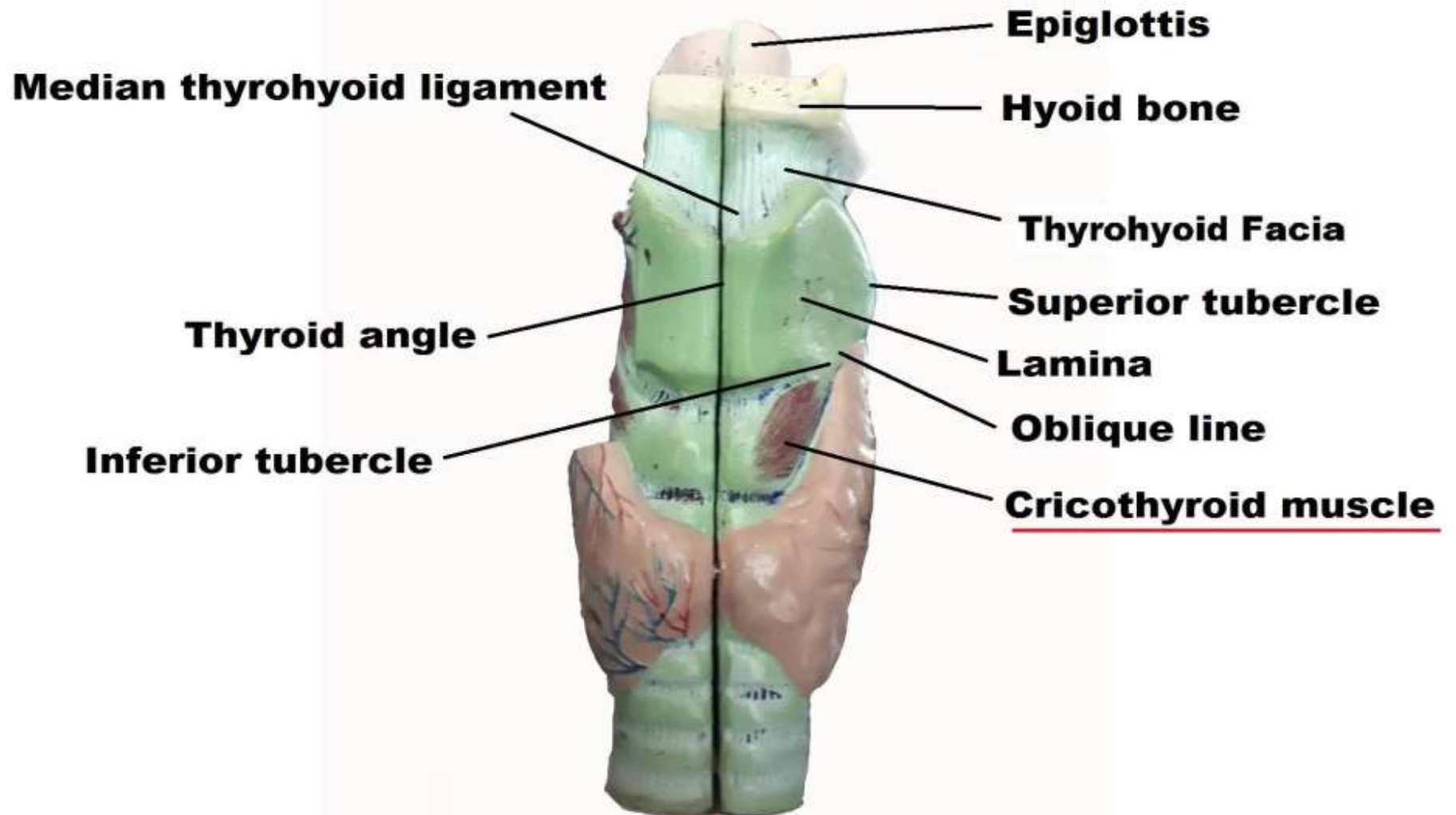


@anatomy_acland

Lateral border of larynx



Anterior surface of larynx



Lateral surface of larynx

Aryepiglottic part of oblique arytenoid muscle

Thyro-epiglottic part of thyro-arytenoid muscle

Thyro-arytenoid muscle

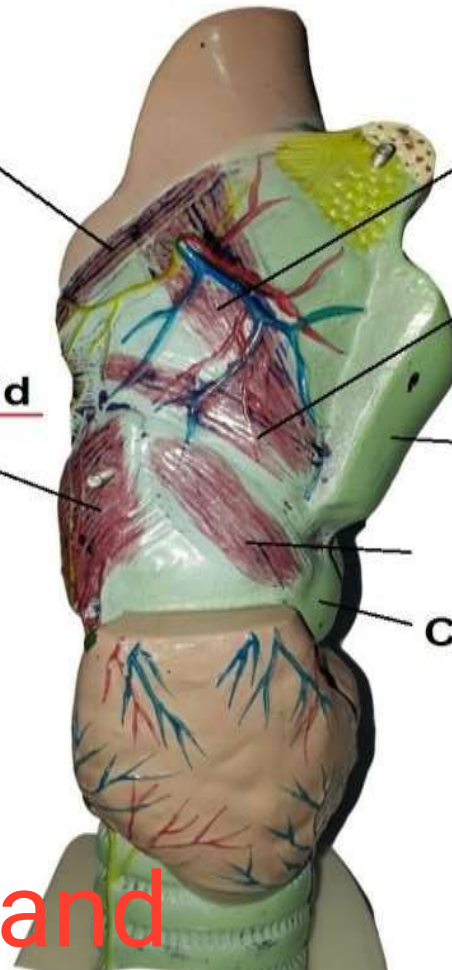
Posterior crico-arytenoid muscle

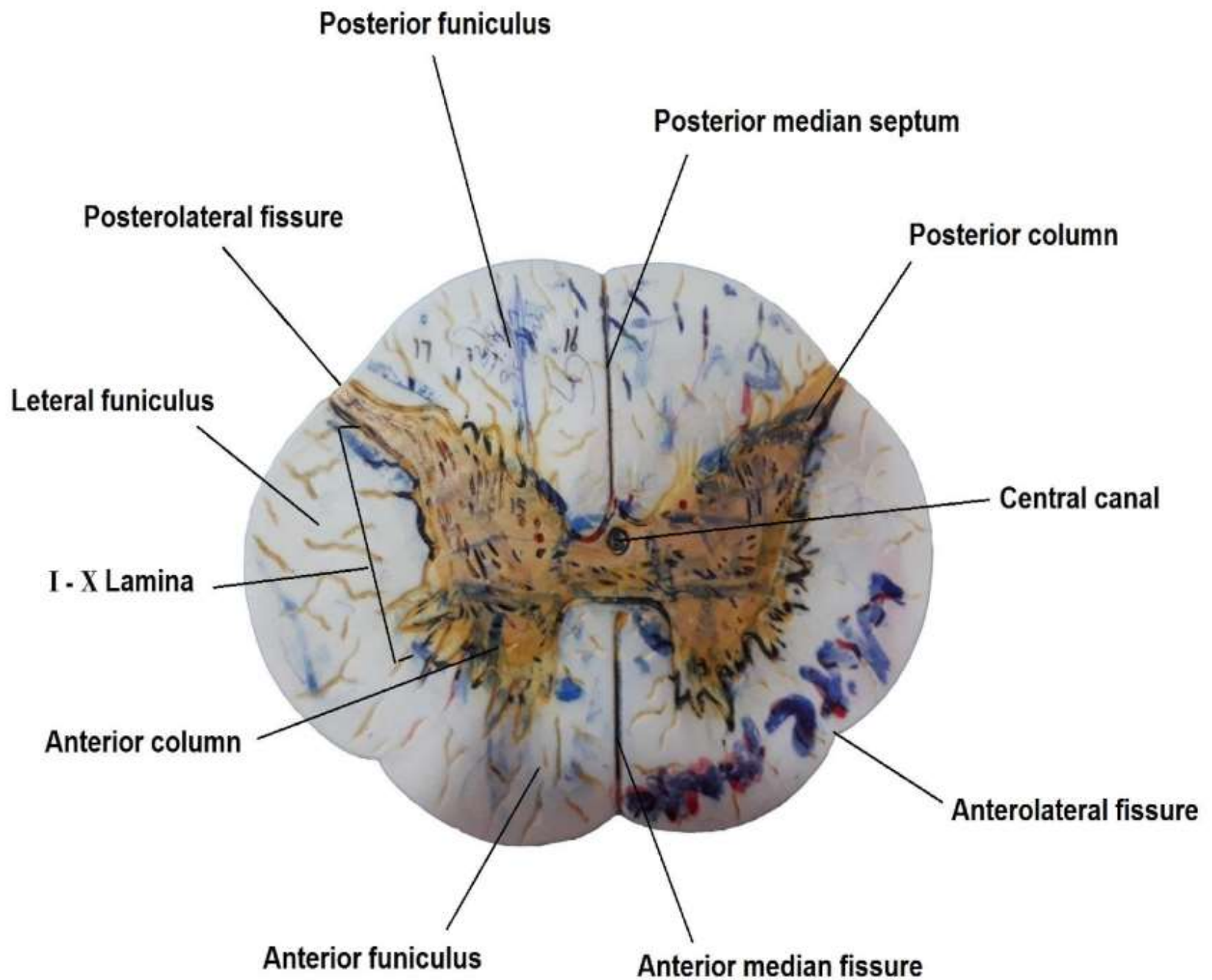
Thyroid cartilage

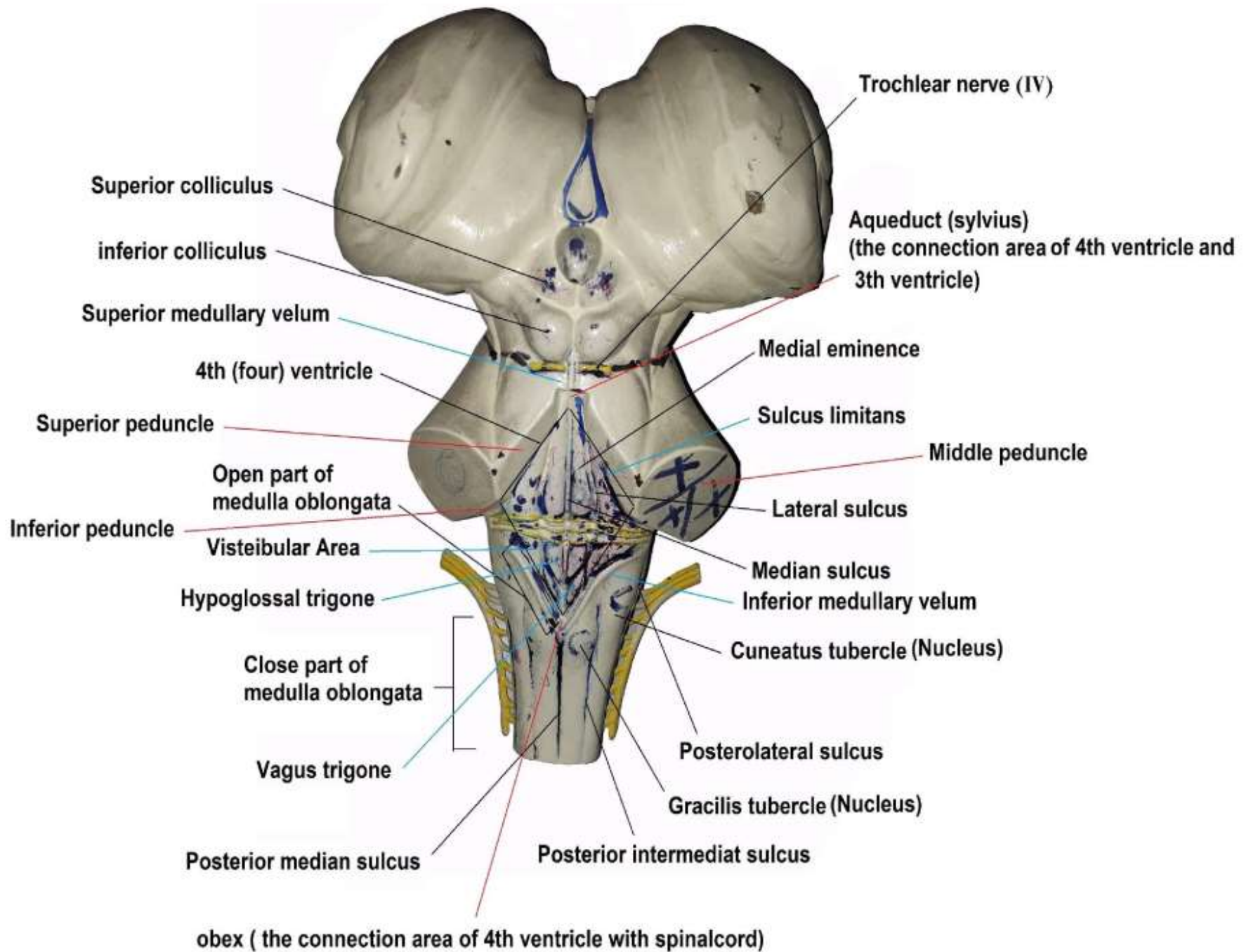
Lateral crico-arytenoid muscle

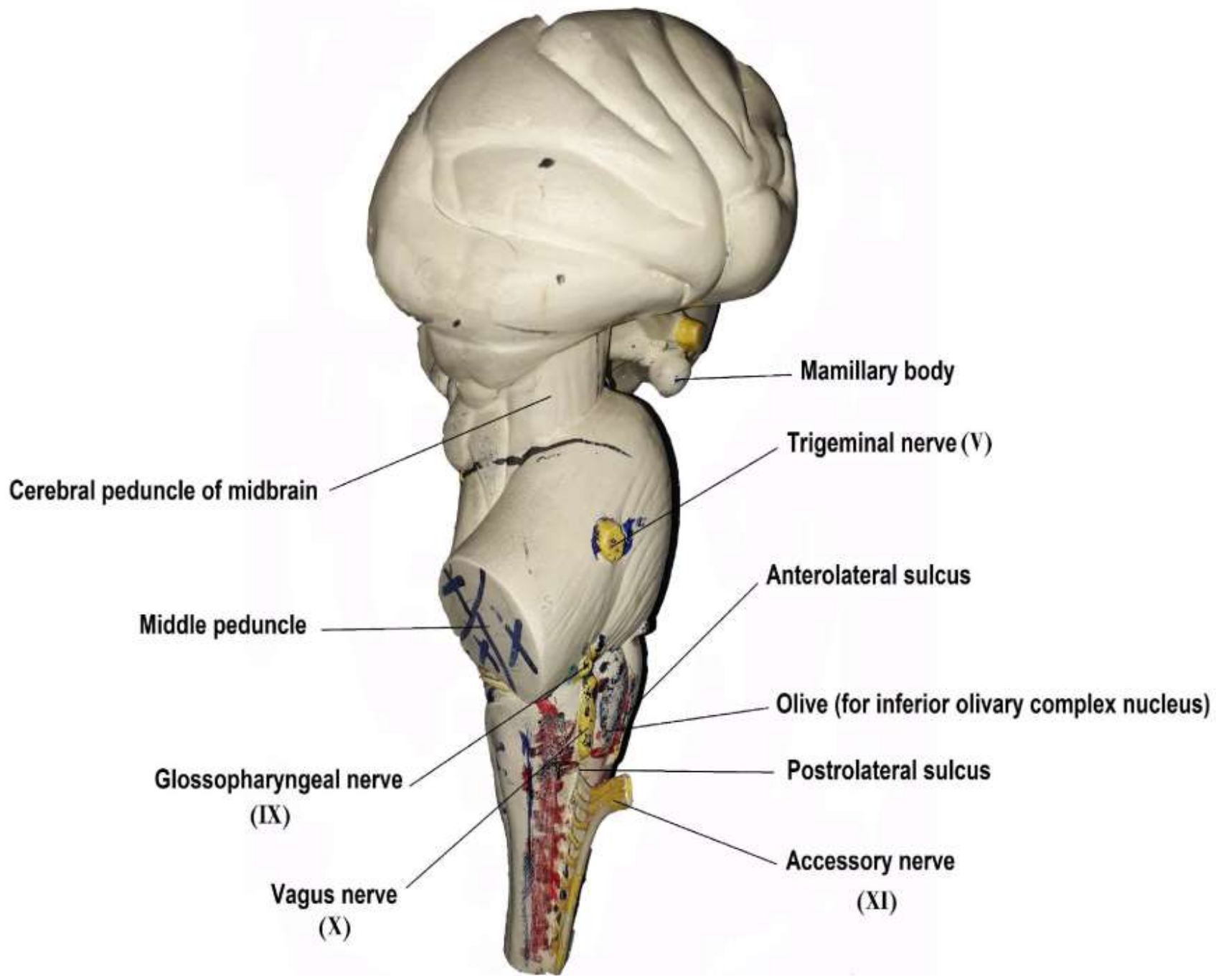
Cricoid cartilage

@anatomy_acland

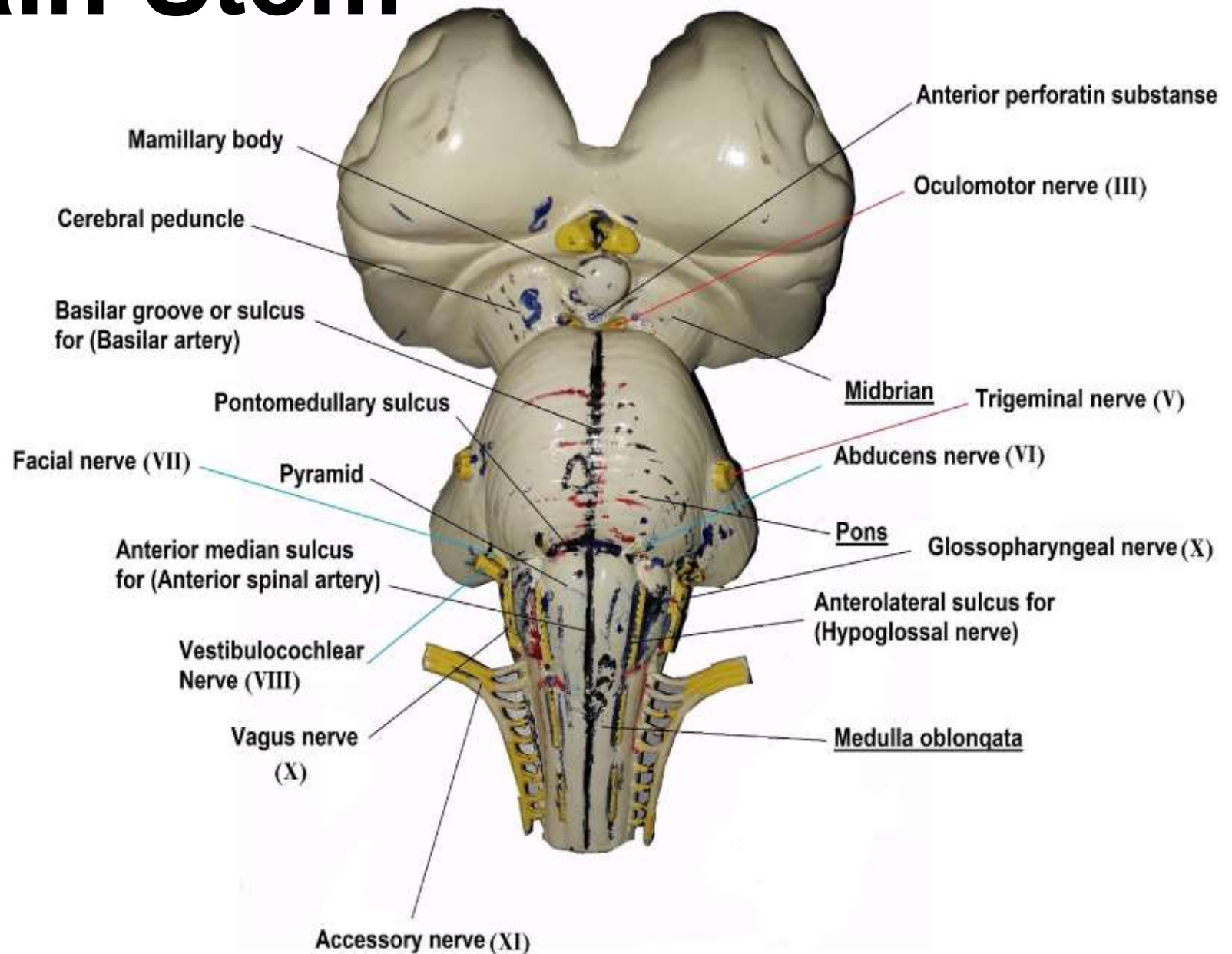






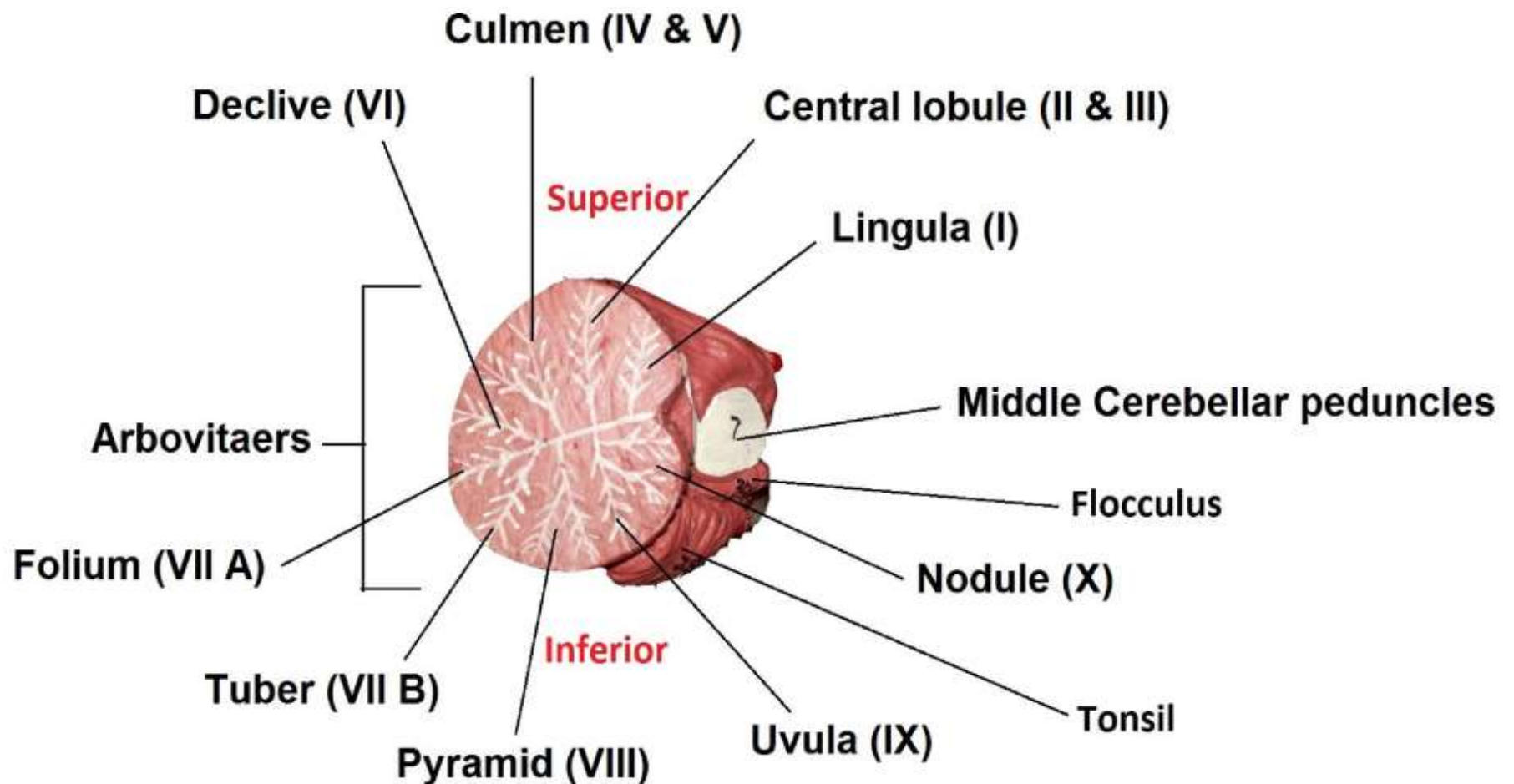


Brain Stem

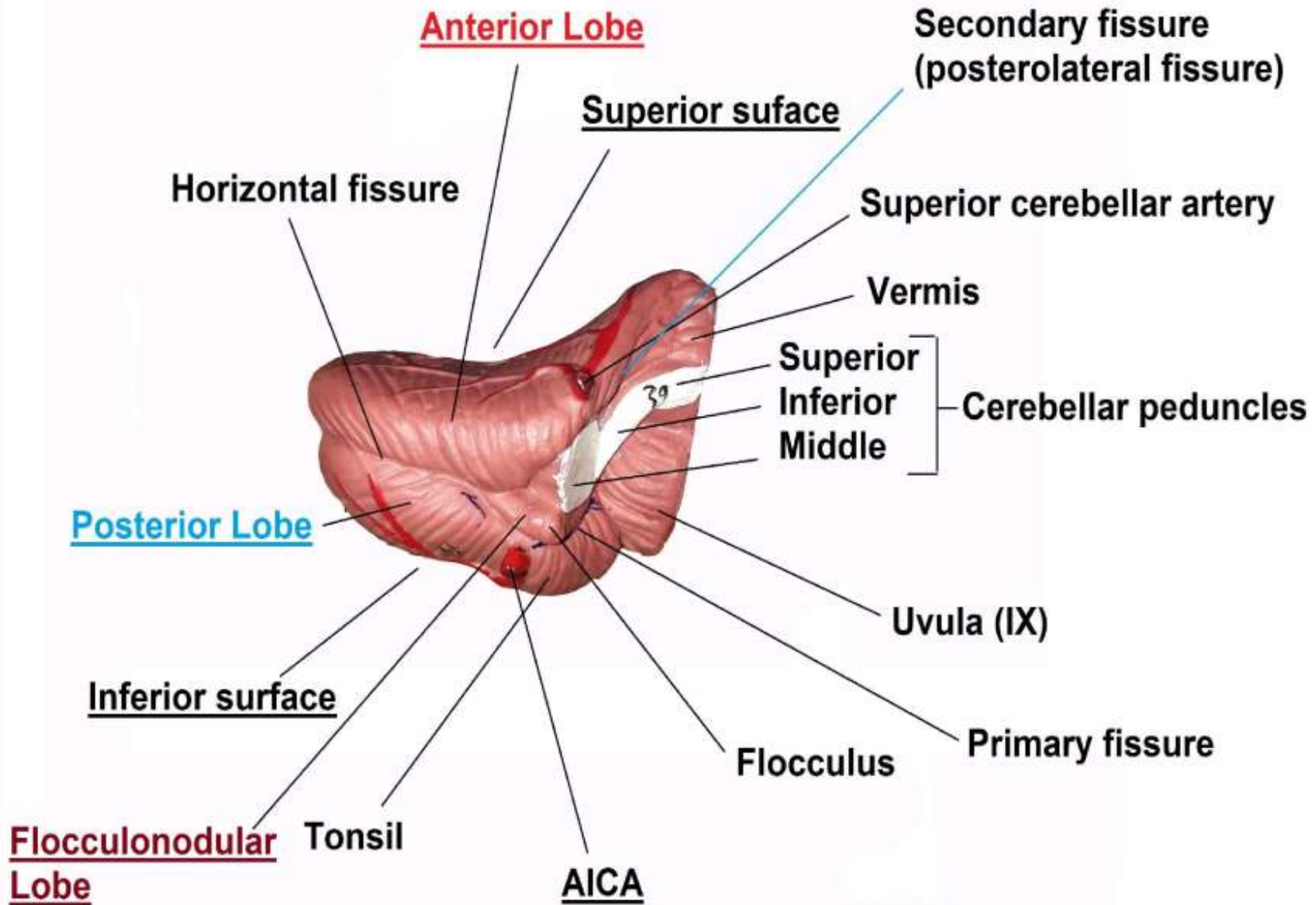


Medial border of cerebellum

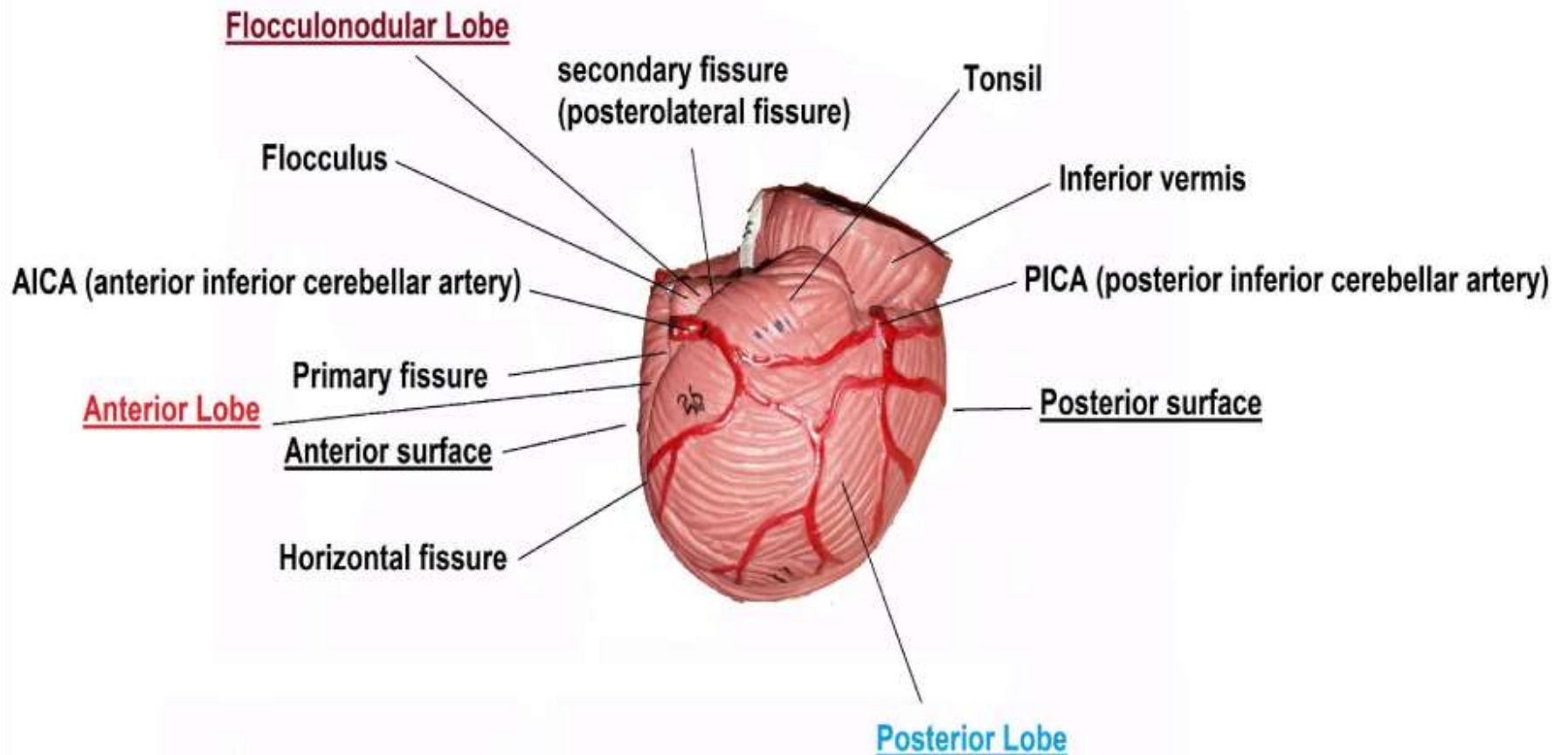
Sagittal plane



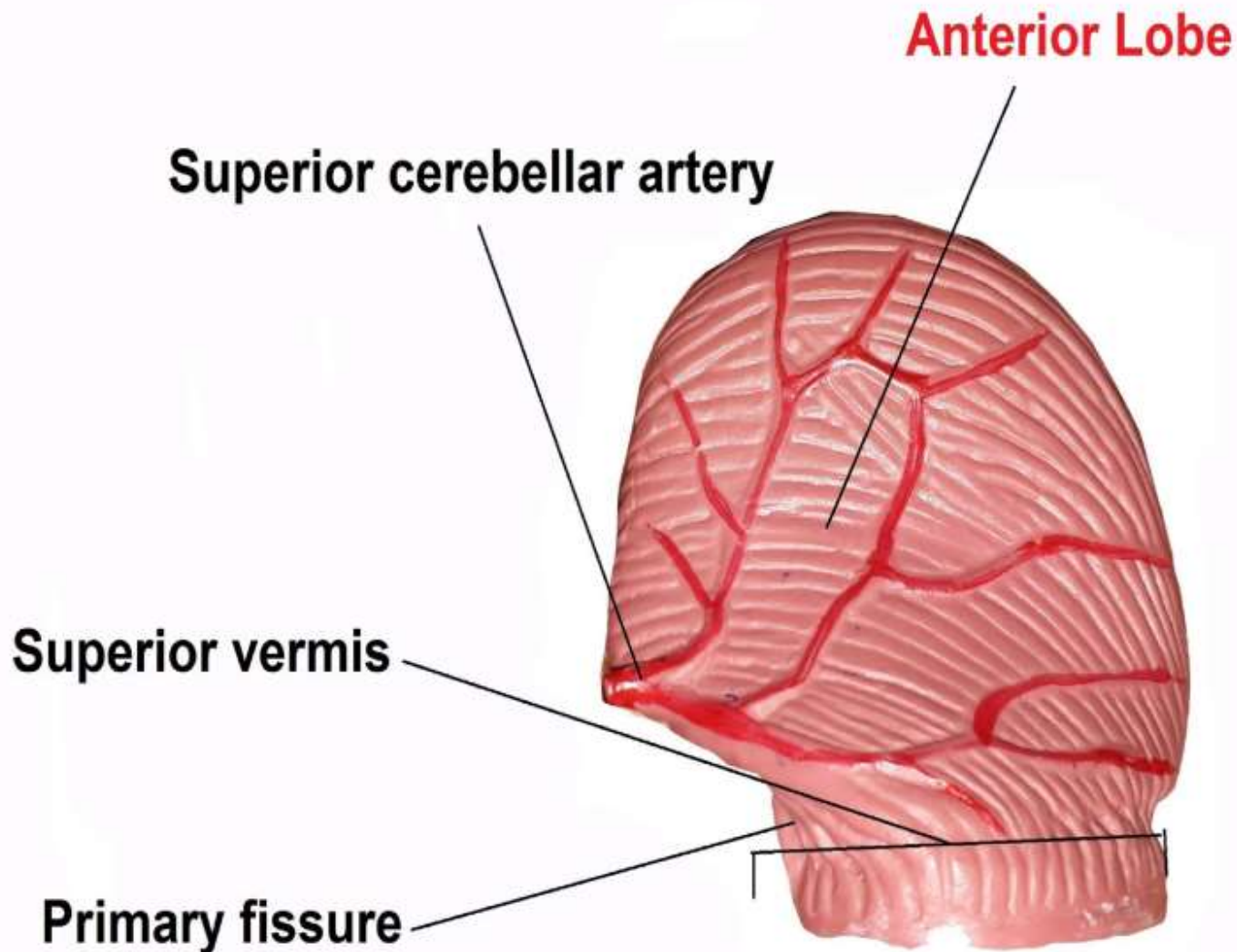
Anterior surface of cerebellum



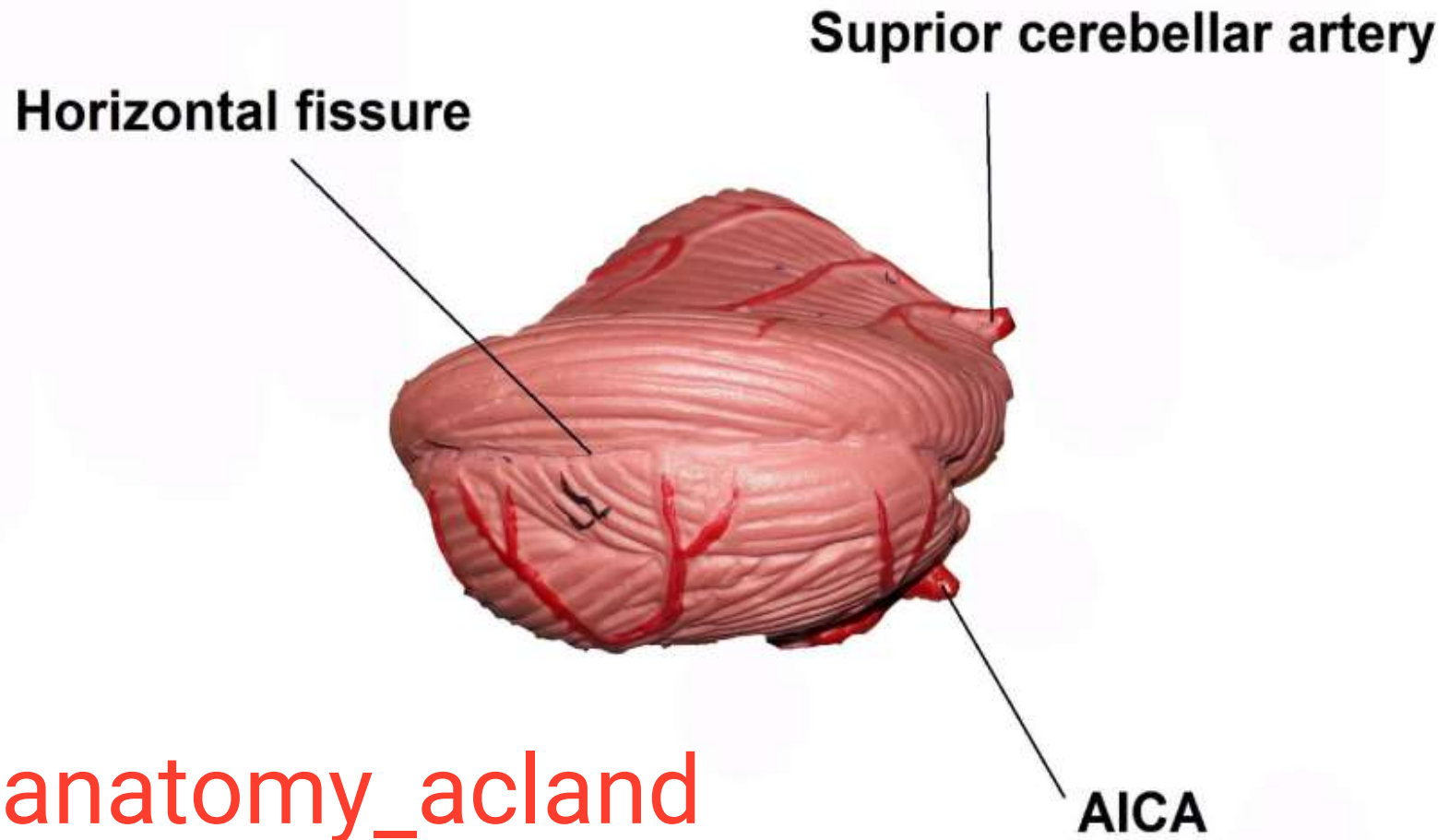
Inferior border of cerebellum



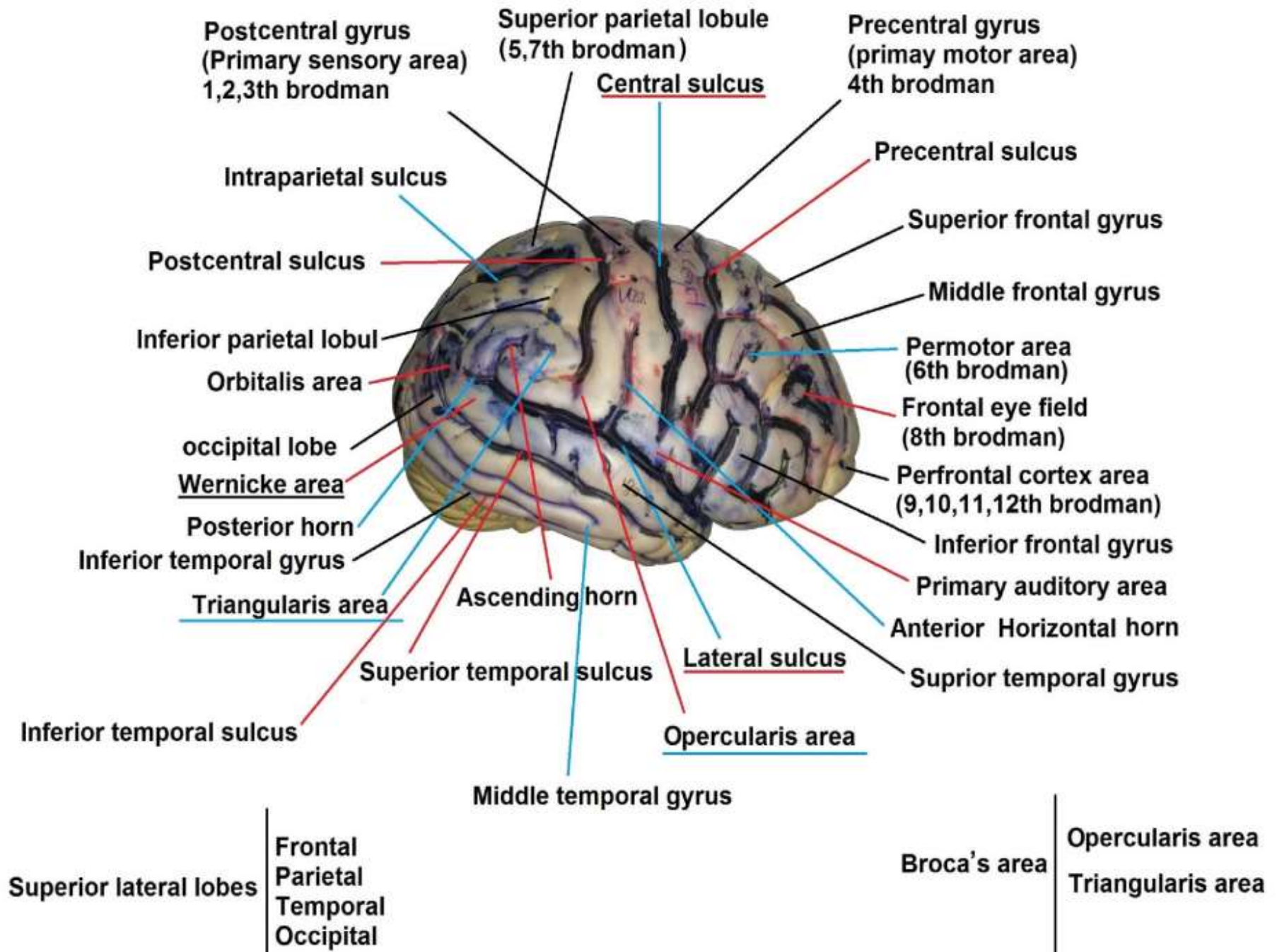
Superior surface of cerebellum

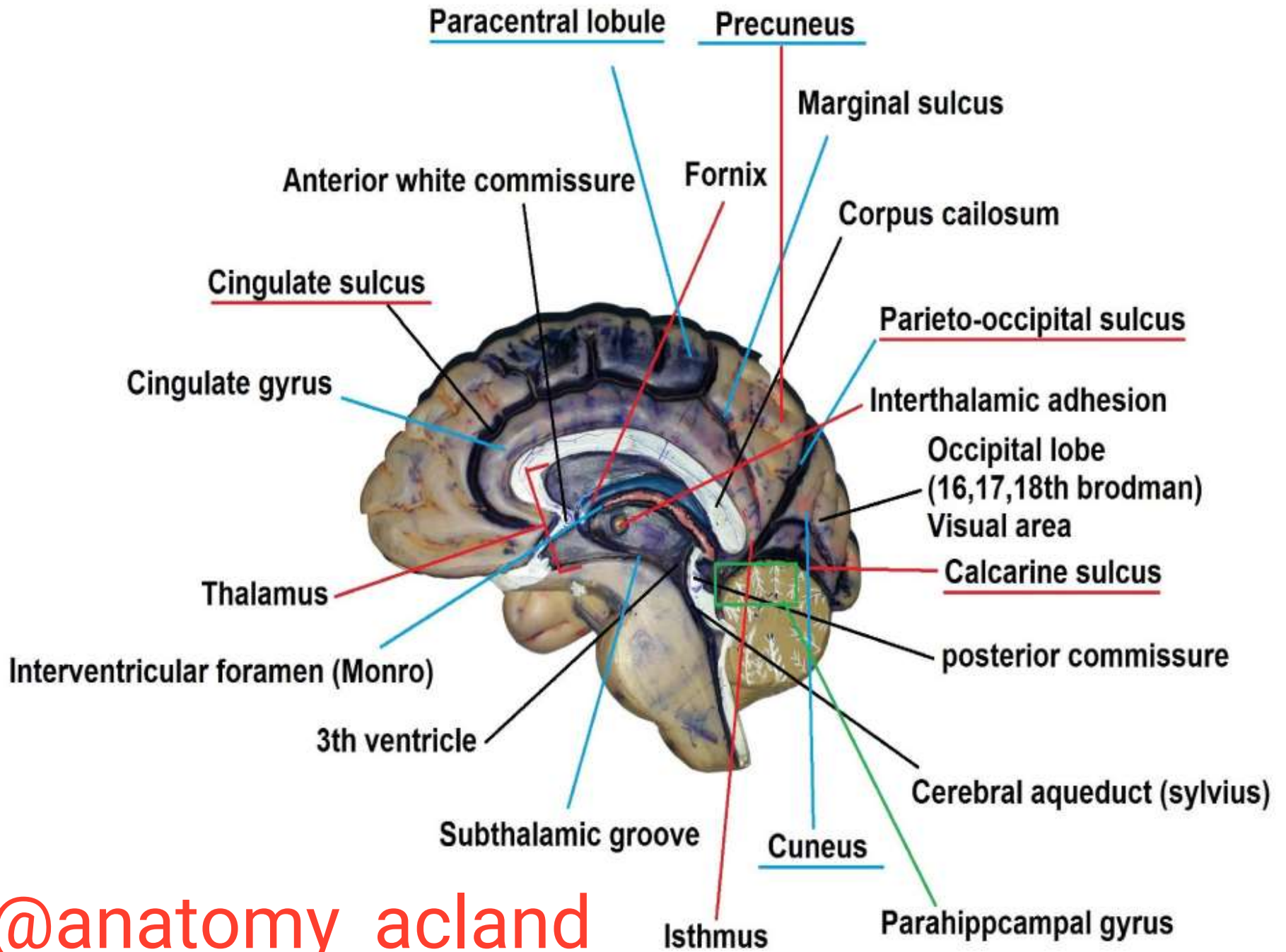


Lateral border of cerebellum



@anatomy_acland





@anatomy_acland