

PATRICIA

the Butterfly



CROCHET PATTERN BY ALL FROM JADE

Copyright © 2024. Content of this document CANNOT be copied, reproduced, altered, published or distributed in any way. You MAY sell finished products made with this pattern, provided credit to All From Jade as the designer.

DIFFERENT SIZES

If you change the yarn and crochet hook size, you can make the same toy in different sizes!



JUMBO VERSION (YARN #7)
Yarn: Premier Yarns - Parfait XL
Colors: Seaglass (270g) & Lavender (57g)
Yarn: Premier Yarns - Parfait XL Sprinkles
Color: Anemone (150g)
Crochet hook: 7 mm
Eyes: 28 mm
Final size: 30.5 cm (12'') long
 *You could also use Loops&Threads Sweet Snuggles or Chenille Home yarns and Hobbii Honey Bunny Big



BULKY VERSION (YARN #6)
Yarn: Loops & Threads – Chenille Home Slim
Colors: Agave (80g) & Kombu Green (11g)
Yarn: Loops & Threads – Sweet Snuggles Lite Blossom
Color: Robin (50g)
Crochet hook: 5 mm
Eyes: 22 mm
Final size: 23 cm (9'') long
 *You could also use Premier Yarns - Gumdrop



CHUNKY VERSION (YARN #6)
Yarn: Hobbii – Baby Snuggle
Color: #12 Graphite (55g), #34 Vivid Blue (38g) & #09 Panther (7g)
Crochet hook: 4 mm
Eyes: 14 mm
Final size: 18 cm (7'') long
 *You could also use Hobbii Yarns – Honey Bunny or Premier Yarns – Parfait Chunky



WORSTED WEIGHT YARN (#4)
Yarn: Loops & Threads – Skinny Chenille
Colors: Duckling (17g) & Hummingbird (5g)
Yarn: Loops & Threads – Skinny Chenille Multi
Color: Beetle Multi (8g)
Crochet hook: 3.5 mm
Eyes: 12 mm
Final size: 13 cm (5'') long
 *You could also use any other worsted weight yarn

The table below is only helpful if you are using my [Yarn Calculator Tool](#). If not, you can ignore it.

STITCH COUNT TABLE	Total	Head	Thorax	Piece 1	Pieces 2 to 4	Tail	Small Wings	Big Wings
Butterfly	1725 (or 1753 with legs)	273	246 (or 274 with legs)	87	288 (96 each)	69	302 (151 each)	460 (230 each)

IMPORTANT! For all the chain sts in this pattern, make sure to have a loose tension (or use a bigger hook). I also make all the sl sts in yarn over.

PATTERN

HEAD (in main color)

R1. mr of 8 sc (=8)

R2. 3 inc, Antennae, 2 inc, Antennae, 3 inc (=16)

Antennae = ch 8, starting in 2nd ch: 7 sl st

R3. (1 sc, 1 inc) x8 (skip the antennae – see ‘Tips’ section) (=24)

R4 to R8 (5 rnds). 24 sc (=24)

Secure the eyes between R5-6, with 6 sts in between (the mr is at the top of the head) [image 1].

R9. (2 sc, 1 dec) x6 (=18)

Lightly stuff the top of the head (until R8).

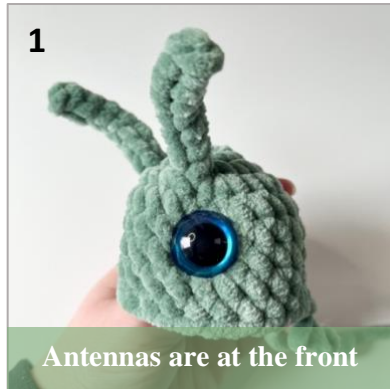
R10 to R12 (3 rnds). 18 sc (=18)

R13. (1 sc, 1 dec) x6 (=12)

R14. 6 dec (=6)

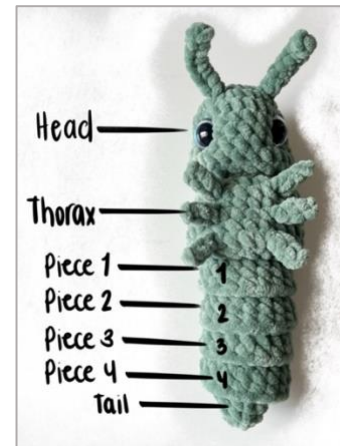
Cut a short yarn tail and pull it out. **You do not** need to close the opening [image 2]. Push R10-14 and the tail inside the head [image 3].

Optional: embroider some cheeks under the eyes (see "Tips" section).



IMPORTANT NOTES AND TIPS BEFORE YOU START THE NEXT PIECES

1. For all the pieces until the *Tail Piece*, the magic ring and the first few rounds won't be visible once assembled, so do not worry if they don't look perfect.
2. You will have to weave in the tail inside the piece and cut the tails short once you're done with a piece. I like to save all the leftover strands in one place and I use them to stuff the tail piece at the end.
3. Once I'm done with a piece, I place it into the previous piece right away. This helps me keep track.
4. You can find a blank drawing on the last page of this pattern that you can print to help you decide which colors you'll be using for your project.



GOOD TO KNOW: I included two thorax variations (A & B); one with legs and one without.
Both are no-sew. Feel free to use whichever you prefer.

THORAX A - with legs (in main color)

R1. mr of 6 sc (=6)

R2. 6 inc (=12)

R3. 12 sc (=12)

R4. (1 sc, 1 inc) x6 (=18)

R5. (2 sc, 1 inc, Leg) x2, (2 sc, 1 inc) x4 (=24)

R6. 24 sc (skip the legs) (=24)

R7. (4 sc, Leg) x2, 16 sc (=24)

R8. 24 sc (skip the legs) (=24)

R9. (4 sc, Leg) x2, 16 sc (=24)

Leg = ch 4, starting in 2nd ch: 3 sl st

R10. 24 sc (skip the legs) (=24)

R11. (2 sc, 1 dec) x6 (=18)

Lightly stuff the thorax (until R10).

R12. 18 sc (=18)

R13. (1 sc, 1 dec) x6 (=12)

R14. 6 dec (=6)

Cut a short yarn tail and pull it out. **You do not** need to close the opening [image 4].

Push R11-14 and the tail inside the thorax [image 5].



THORAX B - without legs (in main color)

R1. mr of 6 sc (=6)

R2. 6 inc (=12)

R3. 12 sc (=12)

R4. (1 sc, 1 inc) x6 (=18)

R5. (2 sc, 1 inc) x6 (=24)

R6 to R10 (5 rnds). 24 sc (=24)

R11. (2 sc, 1 dec) x6 (=18)

Lightly stuff the thorax (until R10).

R12. 18 sc (=18)

R13. (1 sc, 1 dec) x6 (=12)

R14. 6 dec (=6)

Cut a short yarn tail and pull it out. **You do not** need to close the opening [image 6].

Push R11-14 and the tail inside the thorax.



PIECE 1 (in main color)

R1. mr of 6 sc (=6)

R2. (1 sc, 1 inc) x3 (=9)

R3. 9 inc (=18)

R4 to R6 (3 rnds). 18 sc (=18)

Cut a long yarn tail and make an invisible fasten off (see "Tips" section).

Weave in the tail inside the piece (under 3 rnds) and **tie it with the magic ring tail** (as close as possible to the mr – [video tutorial](#) - silent). **Cut the tails short.**



PIECES 2 to 4 (make 3, in main color)

You can make 2 instead of 3 for a shorter body.

R1. mr of 6 sc (=6)

R2. 6 sc (=6)

R3. 6 inc (=12)

R4. (1 sc, 1 inc) x6 (=18)

R5 to R7 (3 rnds). 18 sc (=18)

Cut a long yarn tail and make an invisible fasten off.

Weave in the tail inside the piece and tie it with the magic ring tail. Cut the tails short.



TAIL (in main color)

R1. mr of 6 sc (=6)

R2. (1 sc, 1 inc) x3 (=9)

R3. (2 sc, 1 inc) x3 (=12)

R4. (3 sc, 1 inc) x3 (=15)

R5. (4 sc, 1 inc) x3 (=18)

Lightly stuff the tail (use your leftovers from the other pieces if you kept them).

R6. 9 dec (=9)

Fasten off, cut a long yarn tail and close the opening (see "Tips" section).



SMALL WINGS (make 2, start in wings' main color)

R1. (leave a long tail for sewing before making the mr) mr of 6 sc (=6)

Place the yarn tail outside so it's ready to be used once the wing is done.

R2. (1 sc, 1 inc) x3 (=9)

R3. (1 inc, 2 sc) x3 (=12)

R4. (3 sc, 1 inc) x3 (=15)

R5. (2 sc, 1 inc, 2 sc) x3 (=18)

R6. (5 sc, 1 inc) x3 (=21)

R7. 20 sc, 1 inc (=22)

R8. 2 sc, 2 hdc, 3 dc, 2 hdc, 4 sc, 2 hdc, 3 dc, 2 hdc, 1 sc, **change to accent color** (if you want to make the tip of the wings a different color), 1 sc with accent color (=22)

Cut main color.

R9 will be made crocheting both sides of the wing together (see "Tips" section). **Do not stuff.**

R9. 2 sc, 2 hdc, 3 dc, 2 hdc, 1 sc, 1 sl st (=11)

Fasten off, cut a short yarn tail and **hide it inside the wing.**



BIG WINGS (make 2, start in wing's main color)

Repeat R1 to R7 of the **small wing** and continue from R8 below for the rest of the big wing.

R8. 22 sc (=22)

R9. (10 sc, 1 inc) x2 (=24)

R10. 4 sc, 2 hdc, 3 dc, 1 hdc, 4 sc, 1 hdc, 3 dc, 2 hdc, 4 sc (=24)

Change to accent color (if you want to make the tip of the wings a different color), and cut main color.

R11. 2 dec, 6 sc, 2 dec, 6 sc, 2 dec (=18)

R12. 2 dec, 2 sc, 2 hdc, 1 dc, 1 dc-dec, 1 dc, 2 hdc, 2 sc, 1 dec (=14)

R13. 2 dec, 1 hdc, 2 dc-dec, 1 hdc, 2 dec (=8)

Do not stuff.

Fasten off, cut a long yarn tail, **close the opening** and **hide the tail inside the wing**.

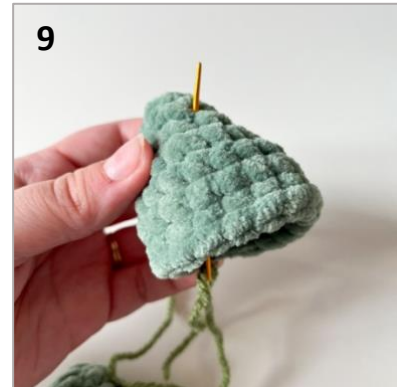
IMPORTANT NOTES AND TIPS ABOUT THE ASSEMBLY

1. The assembly can seem overwhelming at first, but once you understand the process, you'll be able to assemble your project in 5 to 10 mins!
2. You can read the instructions and use the pictures to learn how to do it, or, if you can, I strongly suggest you to watch the [video tutorial](#) when joining the pieces for the first time.
3. You will need a long strand of worsted yarn or embroidery floss, about 4 times the length of your project in the color of your choice (similar to head color if using 3D safety eyes) and a yarn needle (can be a crochet hook for the first pieces – I will always say yarn needle, but it can be done with your hook).
4. You can find my "Express Assembly" tips on next page.

Step 1. Insert the yarn needle through *Tail Piece* (under last 2 rnds) and pull the strand out (pull the strand until they are the same length). Tie three knots with the tails [\[images 7-8\]](#).

Step 2. Taking 1 tail, bring it through *Piece 4*, and out between R2-3, on one side [\[image 9\]](#). Repeat for the other tail, on the other side of the piece, and place *Tail Piece* inside *Piece 4* [\[image 10\]](#).

Step 3. Repeat step 2 for all the pieces (3 to 1 and then thorax) until there's only the *Head Piece* left to joined and tie three knots [\[images 11-12\]](#). TIP: you want the pieces to be secured in place so you can't take them apart, but you will want to be able to move the pieces so they can curl/extend. Tie the first two knots and see if you need to adjust the tightness.



Step 4. Bring the yarn needle from the inside of the head (R10-11) and out at the bottom of the eye [image 13]. Skip one stitch and insert the needle back inside the head [image 14]. Insert the needle in *Thorax* (R4-5) and out under *Piece 1* [image 15]. Repeat the same steps with the other tail/eye and tie three knots with the tails. Cut them short and hide them.

GOOD TO KNOW: If using black safety eyes, bring the needle on one side and then in on the other side of the eye – the strand will be hidden behind the eye once you pull on it. For felt/crocheted/embroidered eyes, do the indentation first, and then place the eyes on top.

Tip: If you prefer the head to be more secured and less flexible, you can use one of the tails and tack the back or front of the head taking 1-2 stitches and bringing the tail back at the bottom of *Piece 1* to secure.



EXPRESS ASSEMBLY TIPS

I **strongly** suggest you to watch the [video tutorial](#) when you are assembling your project for the first time. Once you understand how it is done, you can use these simple tips to make the assembly even faster!

Use two needles at the same time (one for each tail).



Place all pieces (below the thorax) together and push the needles through all of them at the same time, making sure to push it out between R2-3 of the top piece. Continue the assembly as normal.



SEWING THE WINGS [\[video tutorial\]](#)

Sew the **wings** to the back of the **thorax** with about 6 sts in between [\[images 16-29\]](#).

Start with the big wings, about 1 round down from the neck and slightly angled upward *make sure to place the wing the right way [\[image 26\]](#). **Lightly overlap the big wings** while sewing the small ones [\[image 27\]](#).



Tie both tails and hide them



26



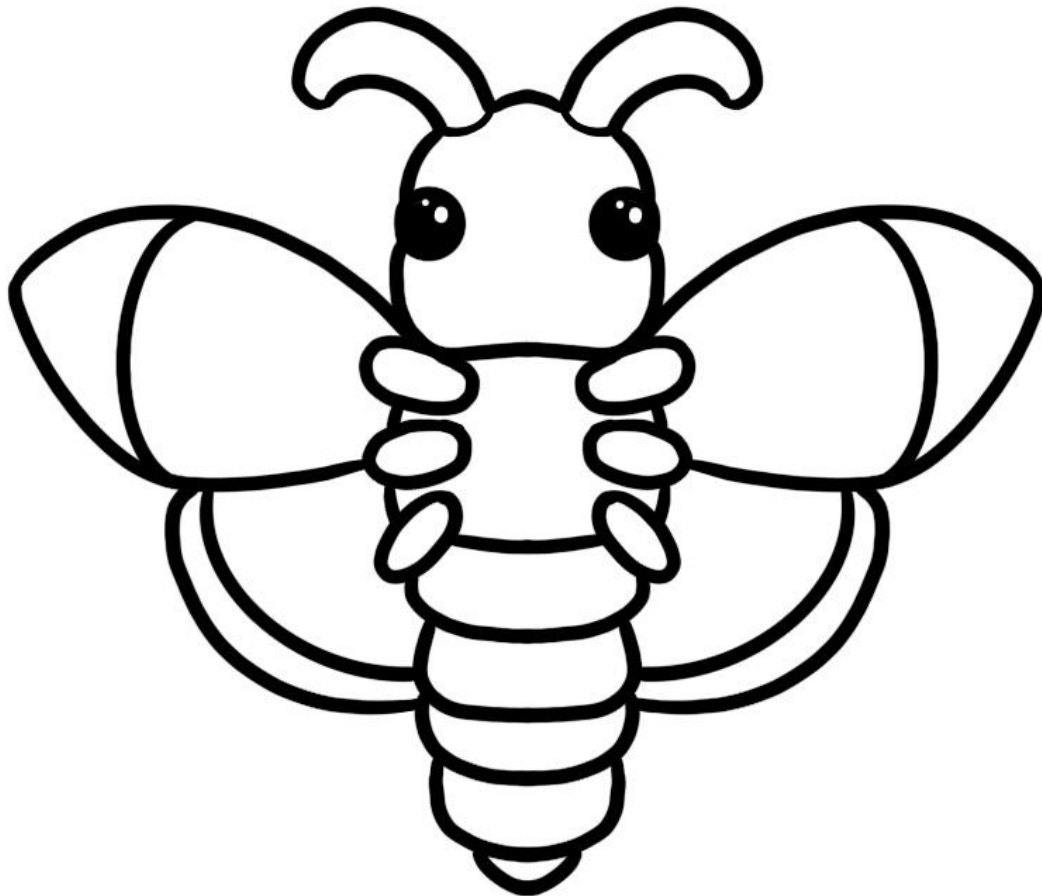
27

Slightly overlap the big wing with the small one



Congratulations!

*Share your makes with me on Instagram
using the [#AllFromJade](https://www.instagram.com/allfromjade)*



PATRICIA THE BUTTERFLY BY ALL FROM JADE